

KD-Validated Anti-c-Jun Rabbit Monoclonal Antibody

Rabbit monoclonal antibody

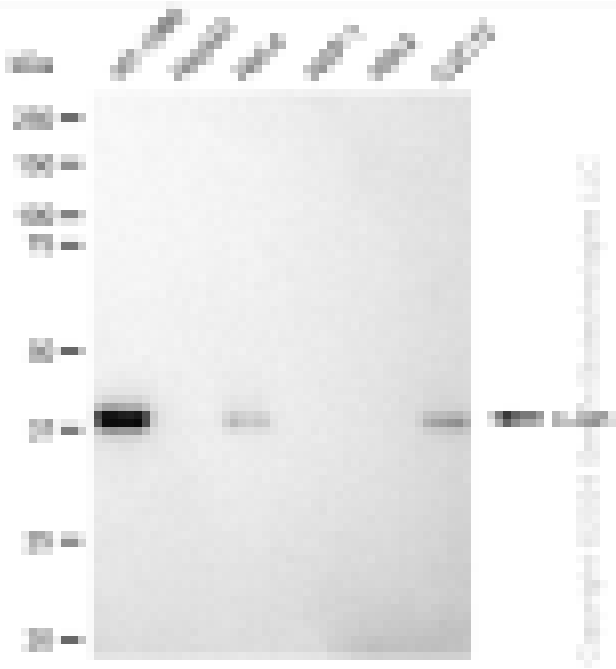
ABG1128

Product Overview

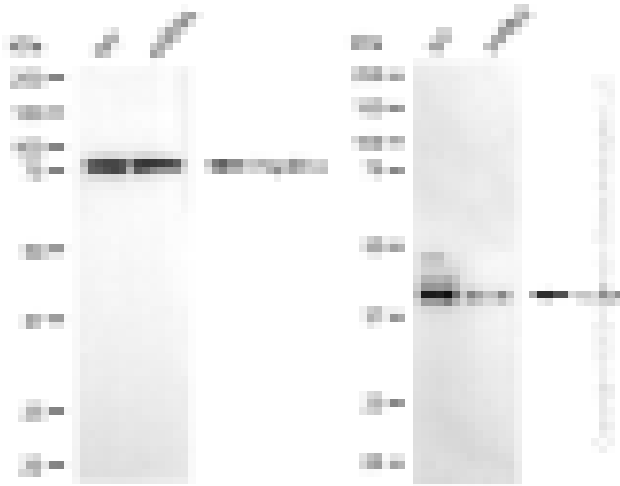
Name	KD-Validated Anti-c-Jun Rabbit Monoclonal Antibody
Catalog #	ABG1128
Clonality	Monoclonal
Accession(Primary)	P05412
Application Note (Approx.)	WB1:5,000 FC1:2,000 ICC1:1,000
Precautions	

Target information(P05412)

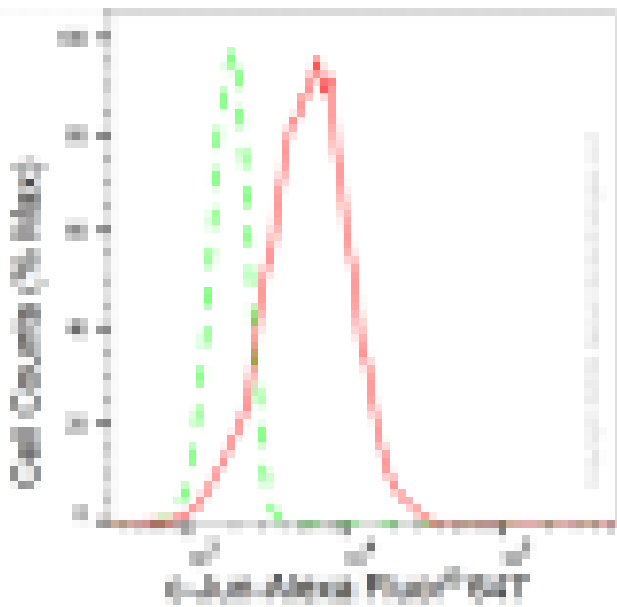
Synonyms**Gene ID****Other Names****Function****Cellular location****Note**



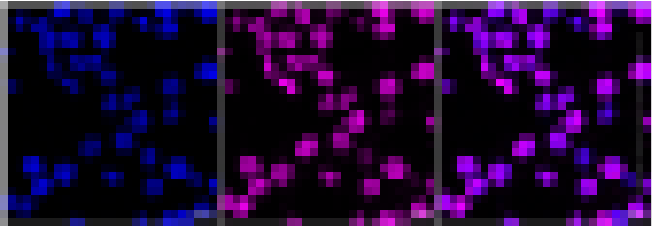
Western blotting analysis using anti-c-Jun antibody (Cat#ABG1128). Total cell lysates (30 µg) from various cell lines were loaded and separated by SDS-PAGE. The blot was incubated with anti-c-Jun antibody (Cat#ABG1128, 1:5,000) and HRP-conjugated goat anti-rabbit secondary antibody respectively.



Western blotting analysis using anti-c-Jun antibody (Cat#ABG1128). C-Jun expression in wild-type (WT) and JUN shRNA knockdown (KD) C2C12 cells with 20 μ g of total cell lysates. Hsp90 serves as a loading control. The blot was incubated with anti-c-Jun antibody (Cat#ABG1128, 1:5,000) and HRP-conjugated goat anti-rabbit secondary antibody respectively.



Flow cytometric analysis of c-Jun expression in HT-1080 cells using c-Jun antibody (Cat#ABG1128, 1:2,000). Green, isotype control; red, c-Jun.



Immunocytochemical staining of HT-1080 cells with C-Jun antibody (Cat#ABG1128, 1:1,000). Nuclei were stained blue with DAPI; C-Jun was stained magenta with Alexa Fluor® 647. Images were taken using Leica stellaris 5. Protein abundance based on laser Intensity and smart gain: Medium. Scale bar: 20 μ m.
