

KD-Validated Anti- α smooth muscle Actin Rabbit Monoclonal Antibody

Rabbit monoclonal antibody

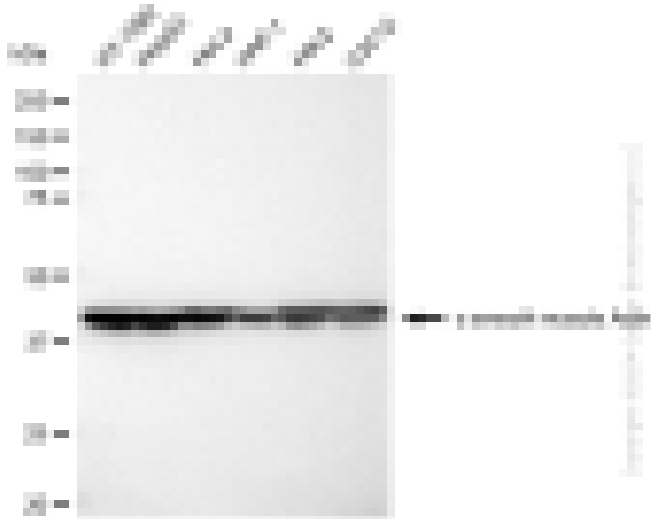
ABG2304

Product Overview

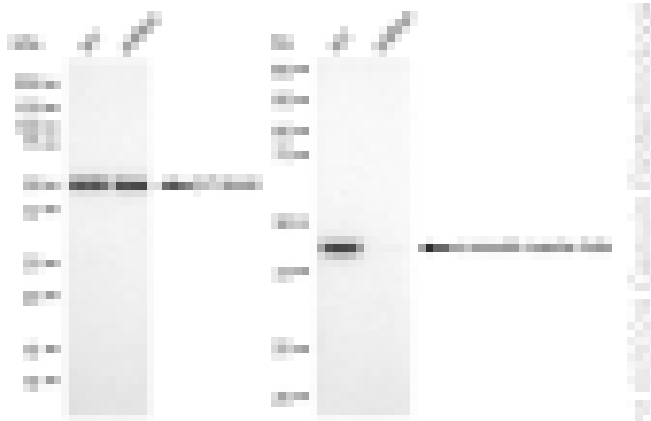
Name	KD-Validated Anti- α smooth muscle Actin Rabbit Monoclonal Antibody
Catalog #	ABG2304
Clonality	Monoclonal
Accession(Primary)	P62736
Application Note (Approx.)	WB1:10,000 FC1:2,000 ICC1:1,000
Precautions	

Target information(P62736)

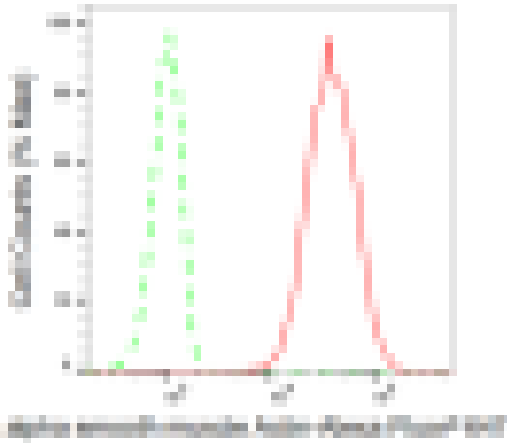
Synonyms**Gene ID****Other Names****Function****Cellular location****Note**



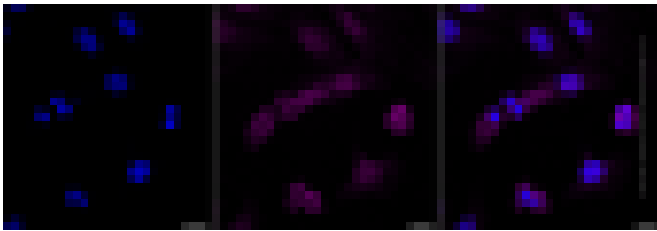
Western blotting analysis using anti-alpha smooth muscle Actin antibody (Cat#ABG2304). Total cell lysates (30 μ g) from various cell lines were loaded and separated by SDS-PAGE. The blot was incubated with anti-alpha smooth muscle Actin antibody (Cat#ABG2304, 1:10,000) and HRP-conjugated goat anti-rabbit secondary antibody respectively.



Western blotting analysis using anti-alpha smooth muscle Actin antibody (Cat#ABG2304). alpha smooth muscle Actin antibody expression in wild type (WT) and alpha smooth muscle Actin antibody shRNA knockdown (KD) HeLa cells with 30 μ g of total cell lysates. β -Tubulin serves as a loading control. The blot was incubated with anti-alpha smooth muscle Actin antibody (Cat#ABG2304, 1:10,000) and HRP-conjugated goat anti-rabbit secondary antibody respectively.



Flow cytometric analysis of alpha smooth muscle Actin expression in HT-1080 cells using alpha smooth muscle Actin antibody (Cat#ABG2304, 1:2,000). Green, isotype control; red, alpha smooth muscle Actin.



Immunocytochemical staining of HT-1080 cells with alpha smooth muscle Actin antibody (Cat#ABG2304, 1:1,000). Nuclei were stained blue with DAPI; alpha smooth muscle Actin was stained magenta with Alexa Fluor® 647. Images were taken using Leica stellaris 5. Protein abundance based on laser Intensity and smart gain: High. Scale bar: 20 μ m.