

# KD-Validated Anti-Phospho-BCAR1 (Y410) Rabbit

*Rabbit monoclonal antibody*

ABG1363

## Product Overview

<b>Name</b>	KD-Validated Anti-Phospho-BCAR1 (Y410) Rabbit Monoclonal Antibody
<b>Catalog #</b>	ABG1363
<b>Clonality</b>	Monoclonal
<b>Accession(Primary)</b>	P56945
<b>Application Note (Approx.)</b>	WB1:5,000 FC1:2,000
<b>Precautions</b>	

## Target information(P56945)

Synonyms

Gene ID

Other Names

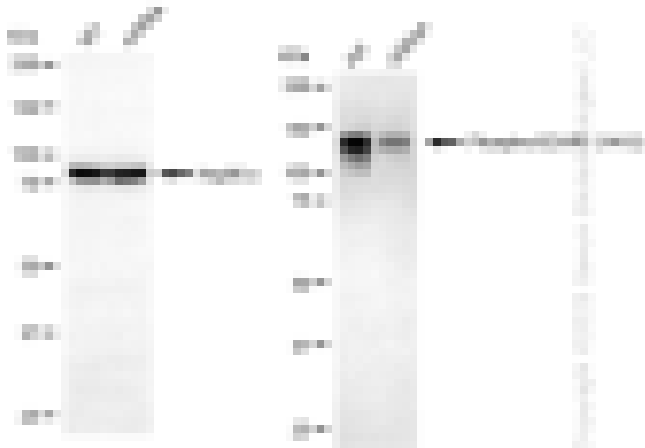
Function

Cellular location

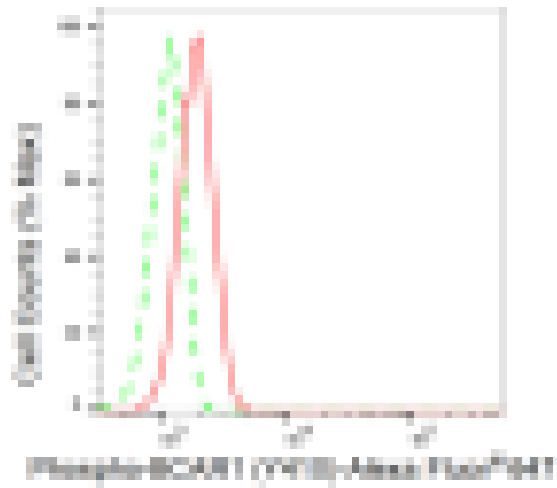
Note



Western blotting analysis using anti-Phospho-BCAR1 (Y410) antibody (Cat#ABG1363). Total cell lysates (30 µg) from various cell lines were loaded and separated by SDS-PAGE. The blot was incubated with anti-Phospho-BCAR1 (Y410) antibody (Cat#ABG1363, 1:5,000) and HRP-conjugated goat anti-rabbit secondary antibody respectively.



Western blotting analysis using anti-Phospho-BCAR1 (Y410) antibody (Cat#ABG1363). Phospho-BCAR1 (Y410) expression in wild type (WT) and BCAR1 shRNA knockdown (KD) HeLa cells with 20 µg of total cell lysates. Hsp90 serves as a loading control. The blot was incubated with anti-Phospho-BCAR1 (Y410) antibody (Cat#ABG1363, 1:5,000) and HRP-conjugated goat anti-rabbit secondary antibody respectively.



Flow cytometric analysis of Phospho-BCAR1 (Y410) expression in C2C12 cells using Phospho-BCAR1 (Y410) antibody (Cat#ABG1363, 1:2,000). Green, isotype control; red, Phospho-BCAR1 (Y410).