

KD-Validated Anti-Phospho-4E BP1 (Thr46) Rabbit Monoclonal Antibody

Rabbit monoclonal antibody

ABG1815

Product Overview

Name	KD-Validated Anti-Phospho-4E BP1 (Thr46) Rabbit Monoclonal Antibody		
Catalog #	ABG1815		
Clonality	Monoclonal		
Accession(Primary)	Q13541		
Application Note (Approx.)	WB1:5,000	FC1:2,000	ICC1:1,000
Precautions			

Target information(Q13541)

Synonyms

Gene ID

Other Names

Function

Cellular location

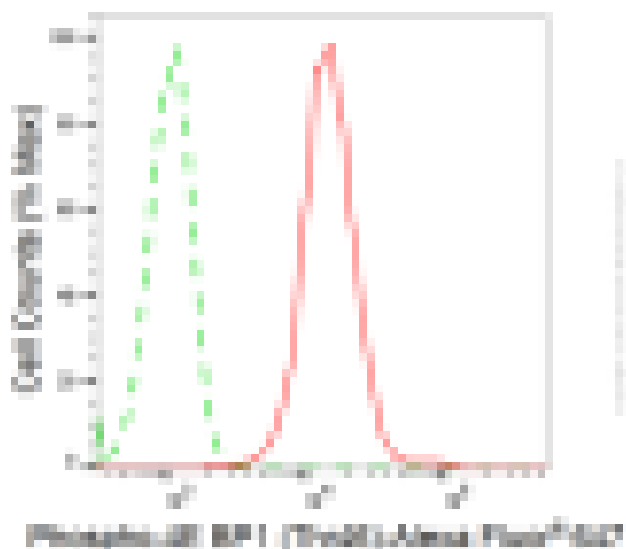
Note



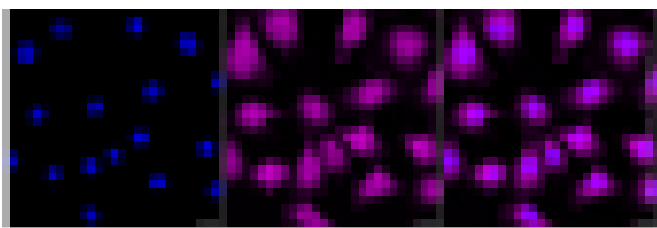
Western blotting analysis using anti-phospho-4E BP1 (Thr46) antibody (Cat#ABG1815). Total cell lysates (30 µg) from various cell lines were loaded and separated by SDS-PAGE. The blot was incubated with anti-phospho-4E BP1 (Thr46) antibody (Cat#ABG1815, 1:5,000) and HRP-conjugated goat anti-rabbit secondary antibody respectively.



Western blotting analysis using anti-phospho-4E BP1 (Thr46) antibody (Cat#ABG1815). Phospho-4E BP1 (Thr46) expression in wild-type (WT) and EIF4EBP1 shRNA knockdown (KD) HeLa cells with 20 µg of total cell lysates. β -Tubulin serves as a loading control. The blot was incubated with anti-phospho-4E BP1 (Thr46) antibody (Cat#ABG1815, 1:5,000) and HRP-conjugated goat anti-rabbit secondary antibody respectively.



Flow cytometric analysis of phospho-4E BP1 (Thr46) expression in C2C12 cells using anti-phospho-4E BP1 (Thr46) antibody (Cat#ABG1815, 1:2,000). Green, isotype control; red, phospho-4E BP1 (Thr46).



Immunocytochemical staining of C2C12 cells with anti-Phospho-4E BP1 (Thr46) antibody (Cat#ABG1815, 1:1,000). Nuclei were stained blue with DAPI; Phospho-4E BP1 (Thr46) was stained magenta with Alexa Fluor® 647. Images were taken using Leica stellaris 5. Protein abundance based on laser Intensity and smart gain: Medium. Scale bar, 20 μ m.