

# KD-Validated Anti-MAPK14 Rabbit Polyclonal Antibody

*Rabbit polyclonal antibody*

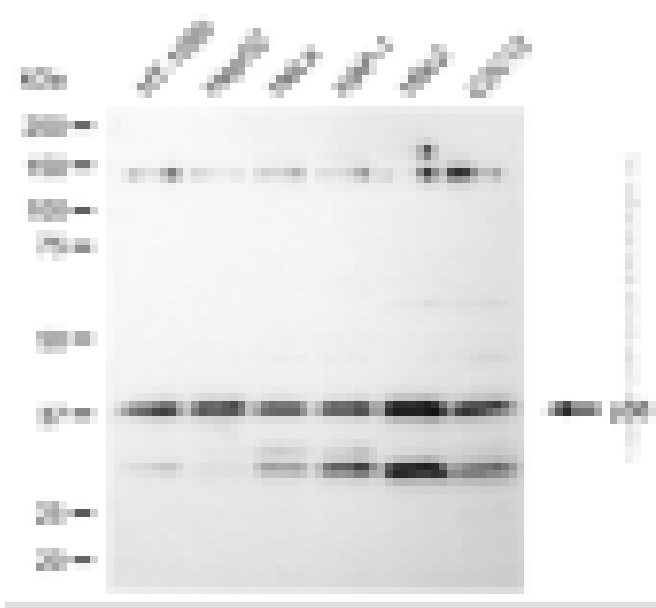
ABG2153

## Product Overview

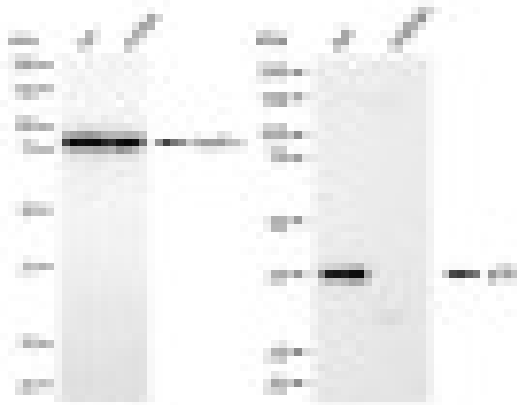
<b>Name</b>	KD-Validated Anti-MAPK14 Rabbit Polyclonal Antibody
<b>Catalog #</b>	ABG2153
<b>Clonality</b>	Polyclonal
<b>Accession(Primary)</b>	Q16539
<b>Application Note (Approx.)</b>	WB1:2,500
<b>Precautions</b>	

## Target information(Q16539)

**Synonyms****Gene ID****Other Names****Function****Cellular location****Note**



Western blotting analysis using anti-p38 antibody (Cat#ABG2153). Total cell lysates (30 µg) from various cell lines were loaded and separated by SDS-PAGE. The blot was incubated with anti-p38 antibody (Cat#ABG2153, 1:2,500) and HRP-conjugated goat anti-rabbit secondary antibody respectively.



Western blotting analysis using anti-p38 antibody (Cat #ABG2153). p38 expression in wild-type (WT) and MAPK14 shRNA knockdown (KD) HT-1080 cells with 30  $\mu$ g of total cell lysates. Hsp90 serves as a loading control. The blot was incubated with anti-p38 antibody (Cat #ABG2153, 1:2,500) and HRP-conjugated goat anti-rabbit secondary antibody respectively.