

KD Validated Anti-L1 cell adhesion molecule Rabbit Monoclonal Antibody

Rabbit monoclonal antibody

ABG1120

Product Overview

Name	KD Validated Anti-L1 cell adhesion molecule Rabbit Monoclonal Antibody	
Catalog #	ABG1120	
Clonality	Monoclonal	
Accession(Primary)	P32004	
Application Note (Approx.)	WB1:5,000	FC1:2,000
Precautions		

Target information(P32004)

Synonyms

Gene ID

Other Names

Function

Cellular location

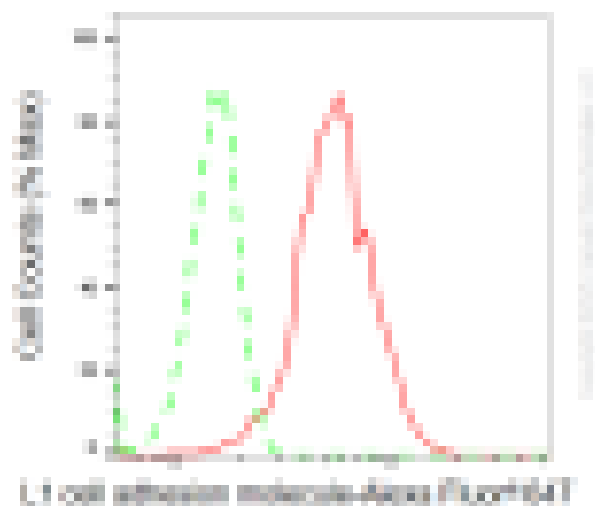
Note



Western blotting analysis using anti-L1 cell adhesion molecule antibody (Cat#ABG1120). Total cell lysates (30 µg) from various cell lines were loaded and separated by SDS-PAGE. The blot was incubated with anti-L1 cell adhesion molecule antibody (Cat#ABG1120, 1:5,000) and HRP-conjugated goat anti-rabbit secondary antibody respectively.



Western blotting analysis using anti-L1 cell adhesion molecule antibody (Cat#ABG1120). L1 cell adhesion molecule expression in wild type (WT) and L1 cell adhesion molecule (L1CAM) knockdown (KD) HSHC cells with 20 µg of total cell lysates. Hsp90 serves as a loading control. The blot was incubated with anti-L1 cell adhesion molecule antibody (Cat#ABG1120, 1:5,000) and HRP-conjugated goat anti-rabbit secondary antibody respectively.



Flow cytometric analysis of L1 cell adhesion molecule expression in HepG2 cells using L1 cell adhesion molecule antibody (Cat#ABG1120, 1:2,000). Green, isotype control; red, L1 cell adhesion molecule.