

# KD-Validated Anti-Interferon regulatory factor 6 Rabbit Monoclonal Antibody

Rabbit monoclonal antibody

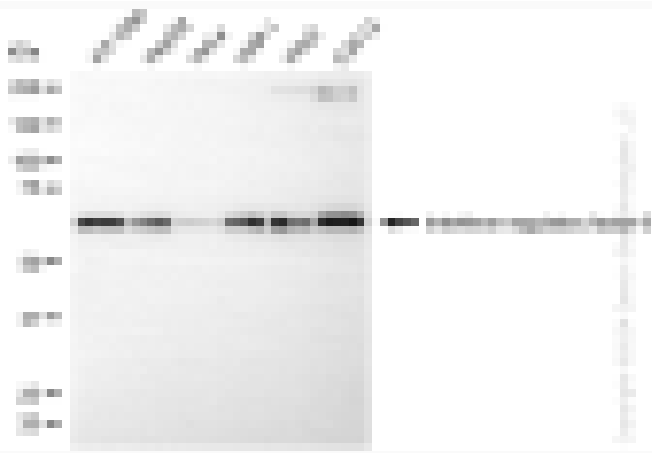
ABG1040

## Product Overview

<b>Name</b>	KD-Validated Anti-Interferon regulatory factor 6 Rabbit Monoclonal Antibody
<b>Catalog #</b>	ABG1040
<b>Clonality</b>	Monoclonal
<b>Accession(Primary)</b>	O14896
<b>Application Note (Approx.)</b>	WB1:5,000 FC1:2,000 ICC1:1,000
<b>Precautions</b>	

## Target information(O14896)

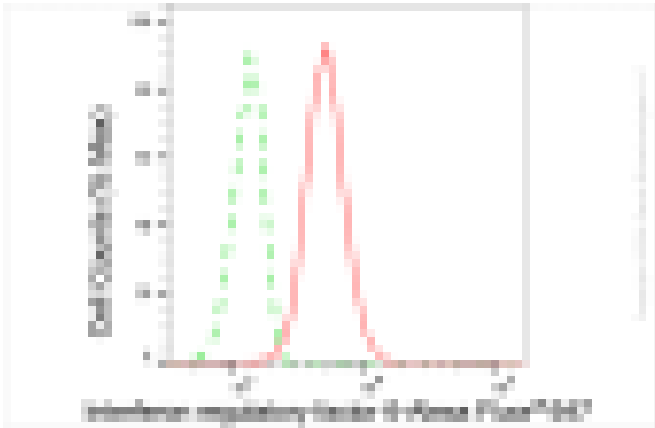
**Synonyms****Gene ID****Other Names****Function****Cellular location****Note**



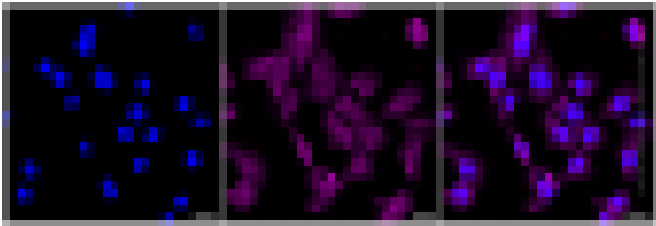
Western blotting analysis using anti-interferon regulatory factor 6 antibody (Cat#ABG1040). Total cell lysates (30  $\mu$ g) from various cell lines were loaded and separated by SDS-PAGE. The blot was incubated with anti-interferon regulatory factor 6 antibody (Cat#ABG1040, 1:5,000) and HRP-conjugated goat anti-rabbit secondary antibody respectively.



Western blotting analysis using anti-interferon regulatory factor 6 antibody (Cat#ABG1040). Interferon regulatory factor 6 expression in wild type (WT) and interferon regulatory factor 6 (IRF6) shRNA knockdown (KD) HeLa cells with 20  $\mu$ g of total cell lysates. Hsp90 ? serves as a loading control. The blot was incubated with anti-interferon regulatory factor 6 antibody (Cat#ABG1040, 1:5,000) and HRP-conjugated goat anti-rabbit secondary antibody respectively.



Flow cytometric analysis of interferon regulatory factor 6 expression in C2C12 cells using Interferon regulatory factor 6 antibody (Cat#ABG1040, 1:2,000). Green, isotype control; red, interferon regulatory factor 6.



Immunocytochemical staining of HepG2 cells with anti-interferon regulatory factor 6 antibody (Cat#ABG1040, 1:1,000). Nuclei were stained blue with DAPI; Interferon regulatory factor 6 was stained magenta with Alexa Fluor® 647. Images were taken using Leica stellaris 5. Protein abundance based on laser Intensity and smart gain: Medium. Scale bar: 20 µm.