

KD-Validated Anti-Inhibin subunit beta B Rabbit Monoclonal Antibody

Rabbit monoclonal antibody

ABG1062

Product Overview

Name	KD-Validated Anti-Inhibin subunit beta B Rabbit Monoclonal Antibody
Catalog #	ABG1062
Clonality	Monoclonal
Accession(Primary)	P09529
Application Note (Approx.)	WB1:5,000 FC1:2,000 ICC1:1,000
Precautions	

Target information(P09529)

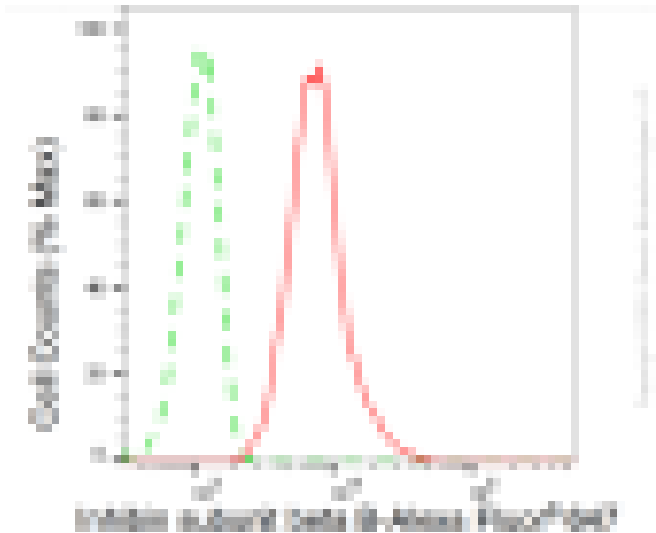
Synonyms**Gene ID****Other Names****Function****Cellular location****Note**



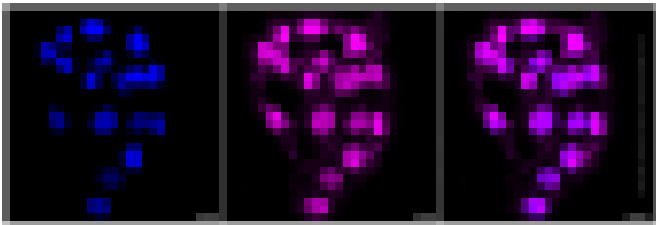
Western blotting analysis using anti-inhibin subunit beta B antibody (Cat#ABG1062). Total cell lysates (30 µg) from various cell lines were loaded and separated by SDS-PAGE. The blot was incubated with anti-inhibin subunit beta B antibody (Cat#ABG1062, 1:2,500) and HRP-conjugated goat anti-rabbit secondary antibody respectively.



Western blotting analysis using anti-inhibin subunit beta B antibody (Cat#ABG1062). Inhibin subunit beta B expression in wild-type (WT) and inhibin subunit beta B (INHBB) shRNA knockdown (KD) HT-1080 cells with 30 µg of total cell lysates. Hsp90 serves as a loading control. The blot was incubated with anti-inhibin subunit beta B antibody (Cat#ABG1062, 1:5,000) and HRP-conjugated goat anti-rabbit secondary antibody respectively.



Flow cytometric analysis of inhibin subunit beta B expression in HT-1080 cells using inhibin subunit beta B antibody (Cat#ABG1062, 1:2,000). Green, isotype control; red, inhibin subunit beta B.



Immunocytochemical staining of HT-1080 cells with anti-inhibin subunit beta B antibody (Cat#ABG1062, 1:1,000). Nuclei were stained blue with DAPI; Inhibin subunit beta B was stained magenta with Alexa Fluor® 647. Images were taken using Leica stellaris 5. Protein abundance based on laser Intensity and smart gain: High. Scale bar: 20 μ m.