

KD-Validated Anti-IL13 receptor alpha 1 Rabbit Monoclonal Antibody

Rabbit monoclonal antibody

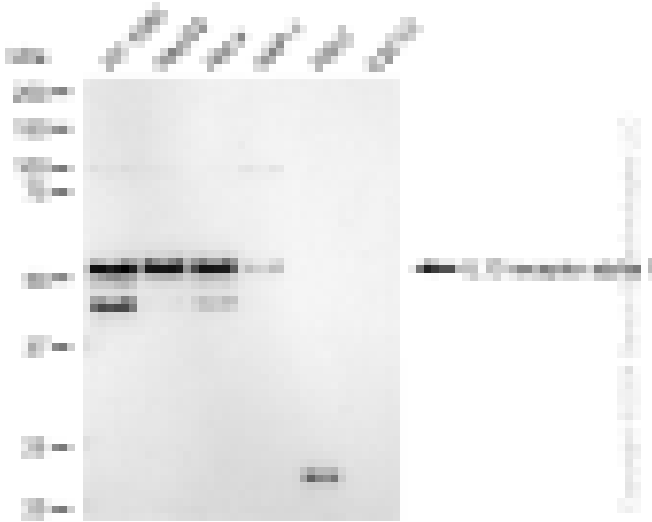
ABG1576

Product Overview

Name	KD-Validated Anti-IL13 receptor alpha 1 Rabbit Monoclonal Antibody
Catalog #	ABG1576
Clonality	Monoclonal
Accession(Primary)	P78552
Application Note (Approx.)	WB1:5,000 FC1:2,000 ICC1:1,000
Precautions	

Target information(P78552)

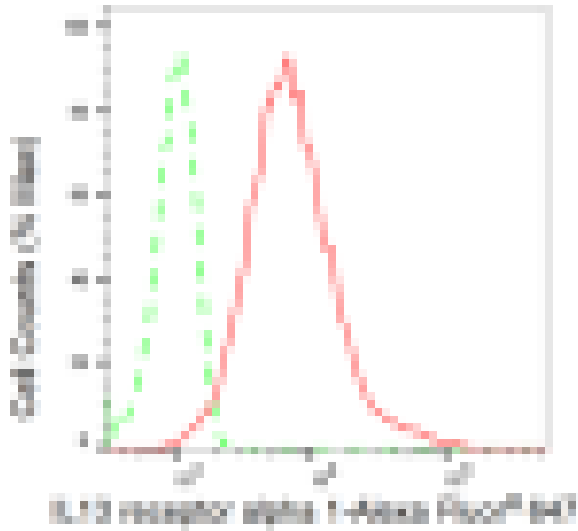
Synonyms**Gene ID****Other Names****Function****Cellular location****Note**



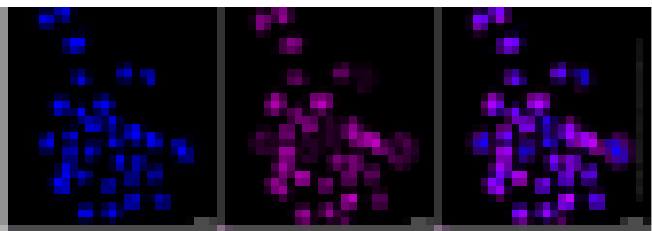
Western blotting analysis using anti-IL13 receptor alpha 1 antibody (Cat#ABG1576). Total cell lysates (30 µg) from various cell lines were loaded and separated by SDS-PAGE. The blot was incubated with anti-IL13 receptor alpha 1 antibody (Cat#ABG1576, 1:5,000) and HRP-conjugated goat anti-rabbit secondary antibody respectively.



Western blotting analysis using anti-IL13 receptor alpha 1 antibody (Cat#ABG1576). IL13 receptor alpha 1 expression in wild type (WT) and IL13 receptor alpha 1 shRNA knockdown (KD) HeLa cells with 20 µg of total cell lysates. Hsp90 serves as a loading control. The blot was incubated with anti-IL13 receptor alpha 1 antibody (Cat#ABG1576, 1:5,000) and HRP-conjugated goat anti-rabbit secondary antibody respectively.



Flow cytometric analysis of IL13 receptor alpha 1 expression in HepG2 cells using IL13 receptor alpha 1 antibody (Cat#ABG1576, 1:2,000). Green, isotype control; red, IL13 receptor alpha 1.



Immunocytochemical staining of HeLa cells with anti-IL13 receptor alpha 1 antibody (Cat#ABG1576, 1:1,000). Nuclei were stained blue with DAPI; IL13 receptor alpha 1 was stained magenta with Alexa Fluor® 647. Images were taken using Leica stellaris 5. Protein abundance based on laser Intensity and smart gain: Medium. Scale bar: 20 μ m.