

KD-Validated Anti-IFNGR1 Rabbit Monoclonal Antibody

Rabbit monoclonal antibody

ABG2104

Product Overview

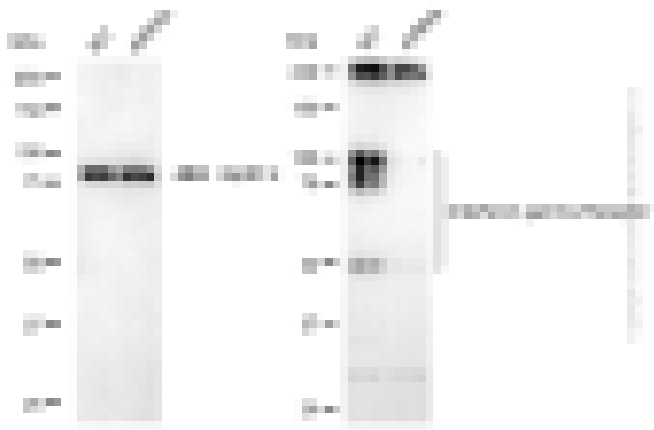
Name	KD-Validated Anti-IFNGR1 Rabbit Monoclonal Antibody
Catalog #	ABG2104
Clonality	Monoclonal
Accession(Primary)	P15260
Application Note (Approx.)	WB1:5,000 FC1:1,000 ICC1:1,000
Precautions	

Target information(P15260)

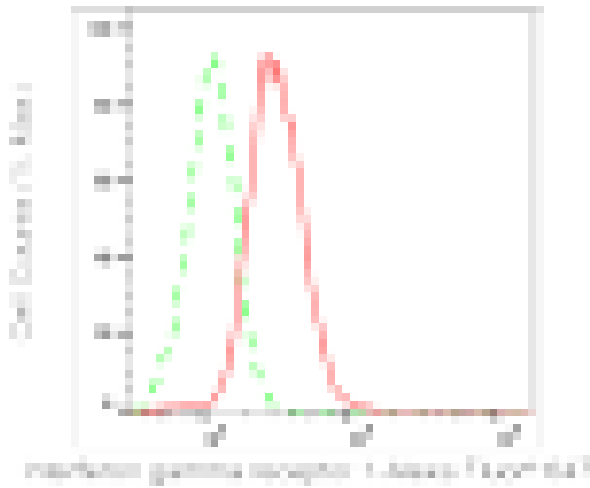
Synonyms**Gene ID****Other Names****Function****Cellular location****Note**



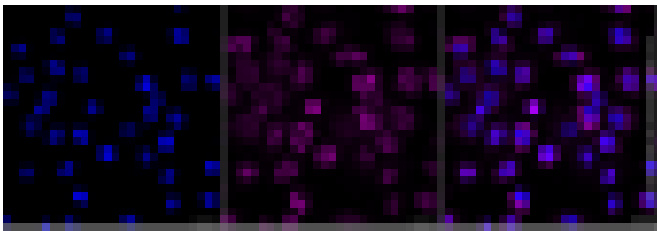
Western blotting analysis using anti-interferon gamma receptor 1 antibody (Cat#ABG2104). Total cell lysates (30 μ g) from various cell lines were loaded and separated by SDS-PAGE. The blot was incubated with anti-interferon gamma receptor 1 antibody (Cat#ABG2104, 1:5,000) and HRP-conjugated goat anti-rabbit secondary antibody respectively.



Western blotting analysis using anti-interferon gamma receptor 1 antibody (Cat#ABG2104). Interferon gamma receptor 1 expression in wild-type (WT) and interferon gamma receptor 1 (IFNGR1) shRNA knockdown (KD) 293T cells with 20 μ g of total cell lysates. Hsp90 α serves as a loading control. The blot was incubated with anti-interferon gamma receptor 1 antibody (Cat#ABG2104, 1:5,000) and HRP-conjugated goat anti-rabbit secondary antibody respectively.



Flow cytometric analysis of HNRNPA1L2 expression in HepG2 cells using anti-HNRNPA1L2 antibody (Cat# 64897, 1:1,000). Green, isotype control; red, HNRNPA1L2.



Immunocytochemical staining of C2C12 cells with anti-Interferon gamma receptor 1 antibody (Cat#ABG2104, 1:1,000). Nuclei were stained blue with DAPI; Interferon gamma receptor 1 was stained magenta with Alexa Fluor® 647. Images were taken using Leica stellaris 5. Protein abundance based on laser Intensity and smart gain: Medium. Scale bar, 20 µm.