

# KD-Validated Anti-EIF2AK2 Mouse Monoclonal Antibody

*Mouse monoclonal antibody*

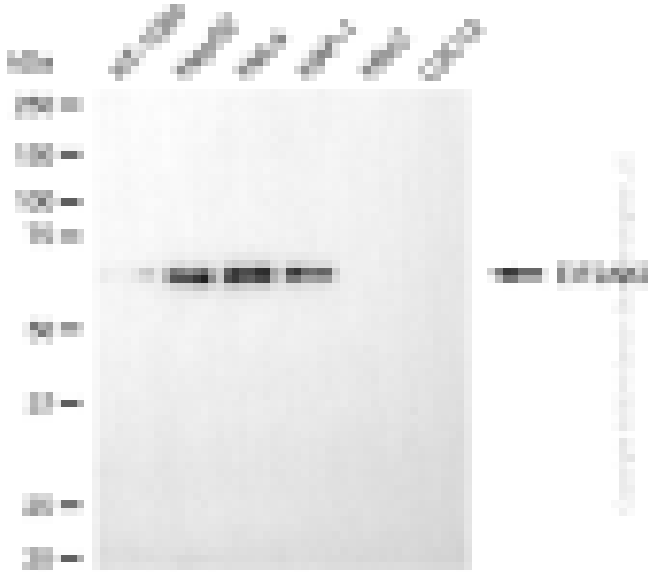
ABG1993

## Product Overview

<b>Name</b>	KD-Validated Anti-EIF2AK2 Mouse Monoclonal Antibody
<b>Catalog #</b>	ABG1993
<b>Clonality</b>	Monoclonal
<b>Accession(Primary)</b>	P19525
<b>Application Note (Approx.)</b>	WB1:5,000 FC1:2,000 ICC1:1,000
<b>Precautions</b>	

## Target information(P19525)

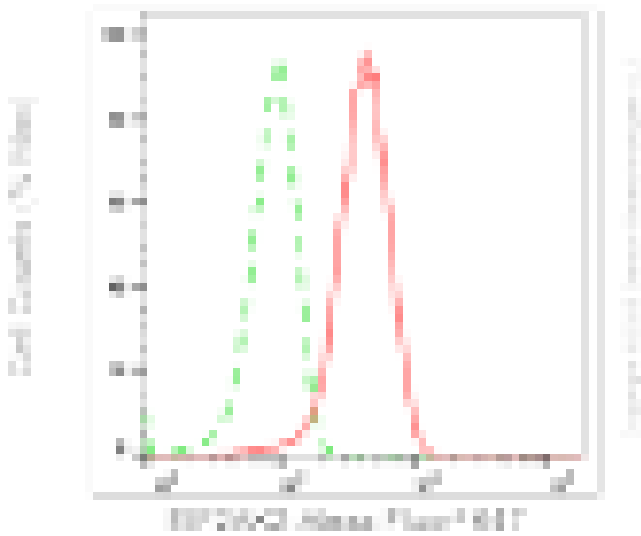
**Synonyms****Gene ID****Other Names****Function****Cellular location****Note**



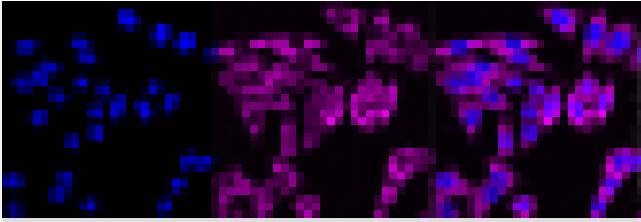
Western blotting analysis using anti-EIF2AK2 antibody (Cat#ABG1993). Total cell lysates (30 µg) from various cell lines were loaded and separated by SDS-PAGE. The blot was incubated with anti-EIF2AK2 antibody (Cat#ABG1993, 1:5,000) and HRP-conjugated goat anti-mouse secondary antibody respectively.



Western blotting analysis using anti-EIF2AK2 antibody (Cat#ABG1993). EIF2AK2 expression in wild-type (WT) and EIF2AK2 shRNA knockdown (KD) HeLa cells with 20 µg of total cell lysates. Hsp90 serves as a loading control. The blot was incubated with anti-EIF2AK2 antibody (Cat#ABG1993, 1:5,000) and HRP-conjugated goat anti-mouse secondary antibody respectively.



Flow cytometric analysis of EIF2AK2 expression in HepG2 cells using anti-EIF2AK2 antibody (Cat#ABG1993, 1:2,000). Green, isotype control; red, EIF2AK2.



Immunocytochemical staining of HepG2 cells with anti-EIF2AK2 antibody(Cat#ABG1993, 1:1,000). Nuclei were stained blue with DAPI; EIF2AK2 was stained magenta with Alexa Fluor® 647. Images were taken using Leica stellaris 5. Protein abundance based on laser Intensity and smart gain: Medium. Scale bar, 20  $\mu$ m.

---