

KD-Validated Anti-Core-binding factor subunit beta Rabbit

Rabbit monoclonal antibody

ABG1223

Product Overview

Name	KD-Validated Anti-Core-binding factor subunit beta Rabbit Monoclonal Antibody
Catalog #	ABG1223
Clonality	Monoclonal
Accession(Primary)	Q13951
Application Note (Approx.)	WB1:5,000 FC1:2,000
Precautions	

Target information(Q13951)

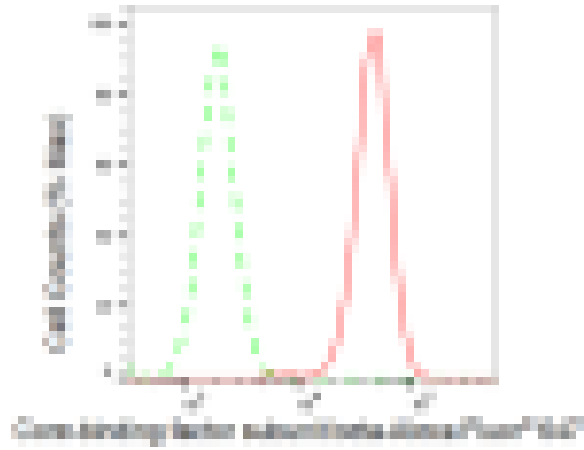
Synonyms**Gene ID****Other Names****Function****Cellular location****Note**



Western blotting analysis using anti-Core-binding factor subunit beta antibody (Cat#ABG1223). Total cell lysates (30 μ g) from various cell lines were loaded and separated by SDS-PAGE. The blot was incubated with anti-Core-binding factor subunit beta antibody (Cat#ABG1223, 1:5,000) and HRP-conjugated goat anti-rabbit secondary antibody respectively.



Western blotting analysis using anti-Core-binding factor subunit beta antibody (Cat#ABG1223). Core-binding factor subunit beta expression in wild type (WT) and Core-binding factor subunit beta shRNA knockdown (KD) HeLa cells with 30 μ g of total cell lysates. β -Tubulin serves as a loading control. The blot was incubated with anti-Core-binding factor subunit beta antibody (Cat#ABG1223, 1:5,000) and HRP-conjugated goat anti-rabbit secondary antibody respectively.



Flow cytometric analysis of Core-binding factor subunit beta expression in HAP-1 cells using Core-binding factor subunit beta antibody (Cat#ABG1223, 1:2,000). Green, isotype control; red, Core-binding factor subunit beta.