

KD-Validated Anti-Chromobox Rabbit Monoclonal Antibody

Rabbit monoclonal antibody

ABG1303

Product Overview

Name	KD-Validated Anti-Chromobox Rabbit Monoclonal Antibody
Catalog #	ABG1303
Clonality	Monoclonal
Accession(Primary)	P45973
Application Note (Approx.)	WB1:5,000 FC1:2,000 ICC1:1,000
Precautions	

Target information(P45973)

Synonyms

Gene ID

Other Names

Function

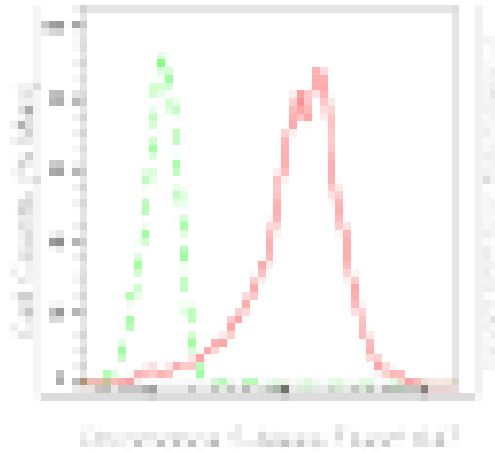
Cellular location

Note

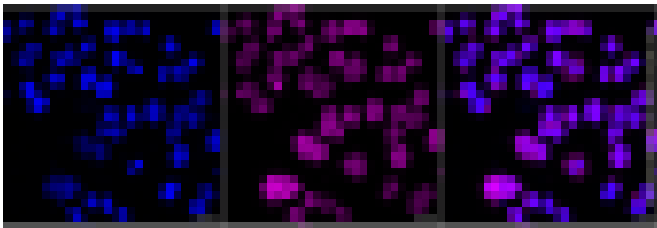


Western blotting analysis using anti-chromobox 5 antibody (Cat#ABG1303). Total cell lysates (30 µg) from various cell lines were loaded and separated by SDS-PAGE. The blot was incubated with anti-chromobox 5 antibody (Cat#ABG1303, 1:5,000) and HRP-conjugated goat anti-rabbit secondary antibody respectively.

Western blotting analysis using anti-chromobox 5 antibody (Cat#ABG1303). Chromobox 5 expression in wild-type (WT) and chromobox 5 (CBX5) knockdown (KD) HeLa cells with 20 µg of total cell lysates. Hsp90 serves as a loading control. The blot was incubated with anti-chromobox 5 antibody (Cat#ABG1303, 1:5,000) and HRP-conjugated goat anti-rabbit secondary antibody respectively.



Flow cytometric analysis of Chromobox 5 expression in HepG2 cells using anti-Chromobox 5 antibody (Cat#ABG1303, 1:2,000). Green, isotype control; red, Chromobox 5.



Immunocytochemical staining of HepG2 cells with anti-Chromobox 5 antibody (Cat#ABG1303, 1:1,000). Nuclei were stained blue with DAPI; Chromobox 5 was stained magenta with Alexa Fluor® 647. Images were taken using Leica stellaris 5. Protein abundance based on laser Intensity and smart gain: High. Scale bar, 20 μ m.