

KD-Validated Anti-Catechol-O-methyltransferase Rabbit Monoclonal Antibody

Rabbit monoclonal antibody

ABG1224

Product Overview

Name	KD-Validated Anti-Catechol-O-methyltransferase Rabbit Monoclonal Antibody
Catalog #	ABG1224
Clonality	Monoclonal
Accession(Primary)	P21964
Application Note (Approx.)	WB1:5,000 FC1:2,000
Precautions	

Target information(P21964)

Synonyms

Gene ID

Other Names

Function

Cellular location

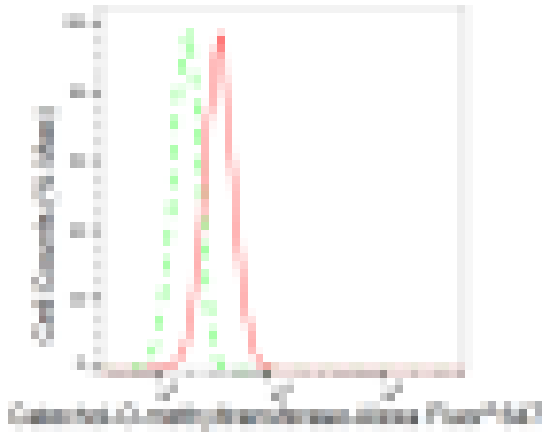
Note



Western blotting analysis using anti-Catechol-O-methyltransferase antibody (Cat#ABG1224). Total cell lysates (30 μ g) from various cell lines were loaded and separated by SDS-PAGE. The blot was incubated with anti-Catechol-O-methyltransferase antibody (Cat#ABG1224, 1:5,000) and HRP-conjugated goat anti-rabbit secondary antibody respectively.



Western blotting analysis using anti-Catechol-O-methyltransferase antibody (Cat#ABG1224). Catechol-O-methyltransferase expression in wild type (WT) and Catechol-O-methyltransferase shRNA knockdown (KD) HeLa cells with 30 μ g of total cell lysates. β -Tubulin serves as a loading control. The blot was incubated with anti-Catechol-O-methyltransferase antibody (Cat#ABG1224, 1:5,000) and HRP-conjugated goat anti-rabbit secondary antibody respectively.



Flow cytometric analysis of Catechol-O-methyltransferase expression in HT-1080 cells using Catechol-O-methyltransferase antibody (Cat#ABG1224, 1:2,000). Green, isotype control; red, Catechol-O-methyltransferase.