

KD-Validated Anti-CHAF1B Rabbit Monoclonal Antibody

Rabbit monoclonal antibody

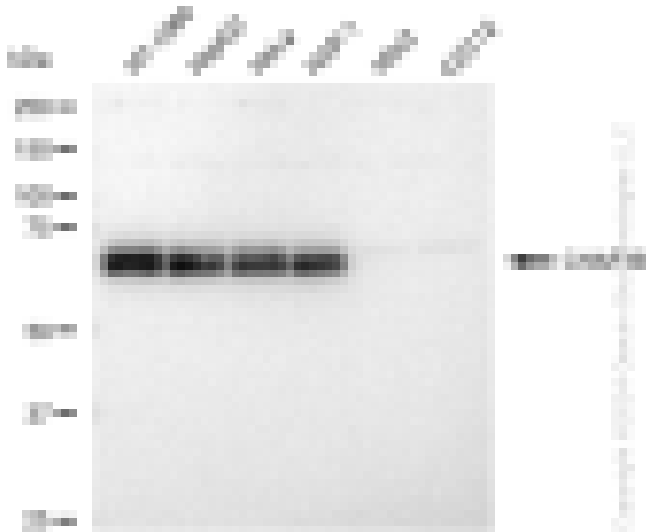
ABG1222

Product Overview

Name	KD-Validated Anti-CHAF1B Rabbit Monoclonal Antibody
Catalog #	ABG1222
Clonality	Monoclonal
Accession(Primary)	Q13112
Application Note (Approx.)	WB1:5,000 FC1:2,000
Precautions	

Target information(Q13112)

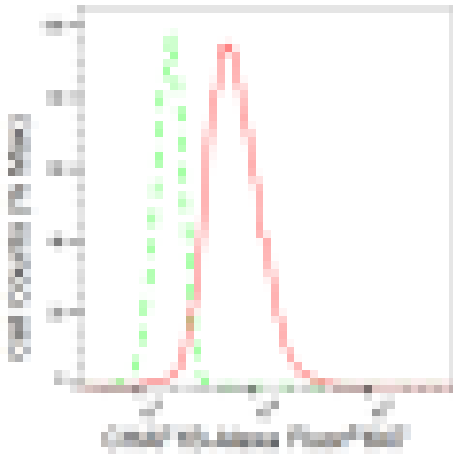
Synonyms**Gene ID****Other Names****Function****Cellular location****Note**



Western blotting analysis using anti-CHAF1B antibody (Cat#ABG1222). Total cell lysates (30 μ g) from various cell lines were loaded and separated by SDS-PAGE. The blot was incubated with anti-CHAF1B antibody (Cat#ABG1222, 1:5,000) and HRP-conjugated goat anti-rabbit secondary antibody respectively.



Western blotting analysis using anti-CHAF1B antibody (Cat#ABG1222). CHAF1B expression in wild type (WT) and CHAF1B shRNA knockdown (KD) HeLa cells with 30 μ g of total cell lysates. β -Tubulin serves as a loading control. The blot was incubated with anti-CHAF1B antibody (Cat#ABG1222, 1:5,000) and HRP-conjugated goat anti-rabbit secondary antibody respectively.



Flow cytometric analysis of CHAF1B expression in HT-1080 cells using CHAF1B antibody (Cat#ABG1222, 1:2,000). Green, isotype control; red, CHAF1B.