

KD-Validated Anti-CDC73 Rabbit Monoclonal Antibody

Rabbit monoclonal antibody

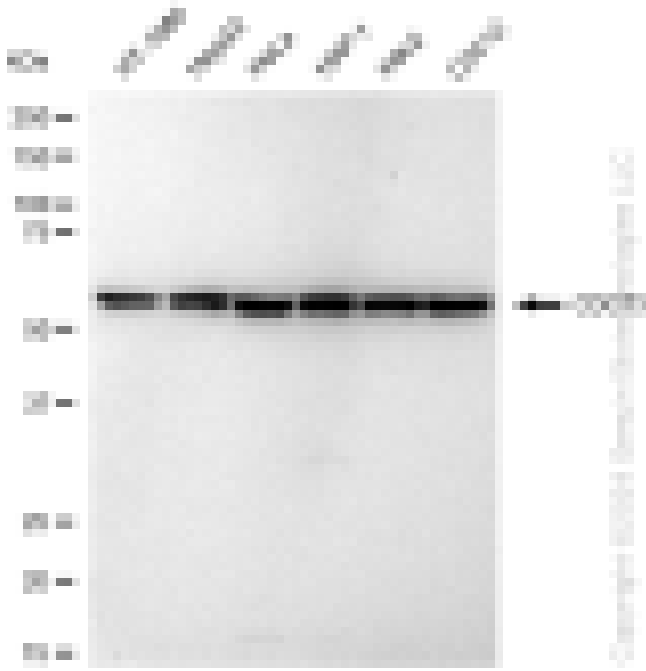
ABG1207

Product Overview

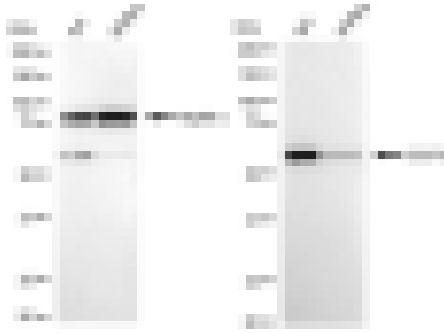
Name	KD-Validated Anti-CDC73 Rabbit Monoclonal Antibody		
Catalog #	ABG1207		
Clonality	Monoclonal		
Accession(Primary)	Q6P1J9		
Application Note (Approx.)	WB1:5,000	FC1:2,000	ICC1:1,000
Precautions			

Target information(Q6P1J9)

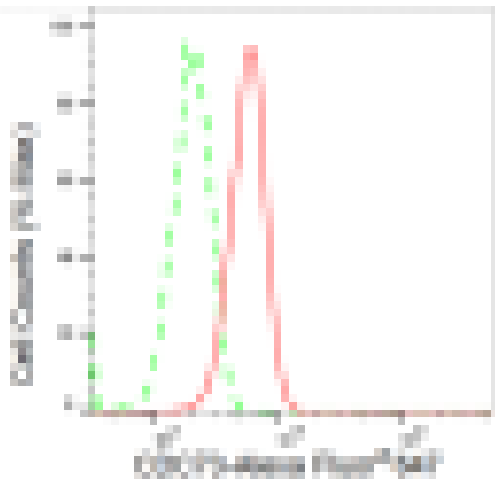
Synonyms**Gene ID****Other Names****Function****Cellular location****Note**



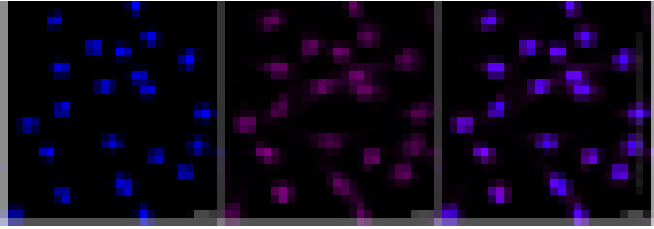
Western blotting analysis using anti-CDC73 antibody (Cat#ABG1207). Total cell lysates (30 µg) from various cell lines were loaded and separated by SDS-PAGE. The blot was incubated with anti-CDC73 antibody (Cat#ABG1207, 1:5,000) and HRP-conjugated goat anti-rabbit secondary antibody respectively.



Western blotting analysis using anti-CDC73 antibody (Cat#ABG1207). CDC73 expression in wild type (WT) and CDC73 shRNA knockdown (KD) HeLa cells with 30 µg of total cell lysates. Hsp90 serves as a loading control. The blot was incubated with anti-CDC73 antibody (Cat#ABG1207, 1:5,000) and HRP-conjugated goat anti-rabbit secondary antibody respectively.



Flow cytometric analysis of CDC73 expression in C2C12 cells using CDC73 antibody (Cat#ABG1207, 1:2,000). Green, isotype control; red, CDC73.



Immunocytochemical staining of C2C12 cells with CDC73 antibody (Cat#ABG1207, 1:1,000). Nuclei were stained blue with DAPI; CDC73 was stained magenta with Alexa Fluor® 647. Images were taken using Leica stellaris 5. Protein abundance based on laser Intensity and smart gain: Low. Scale bar: 20 μ m.