

KD-Validated Anti-Bridging Integrator 1 Rabbit Monoclonal

Rabbit monoclonal antibody

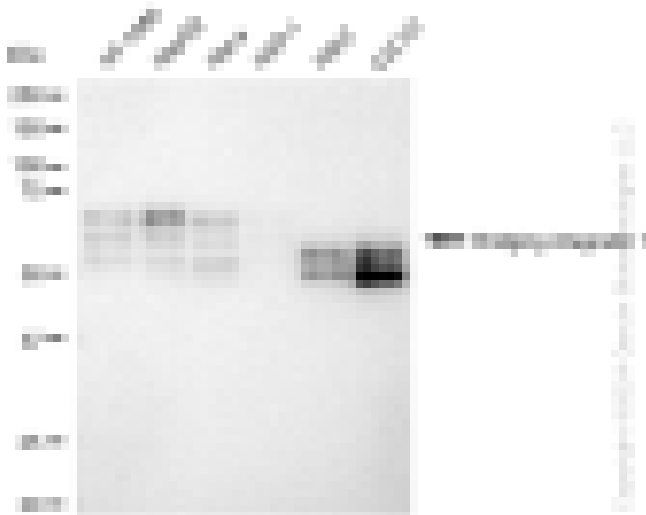
ABG1166

Product Overview

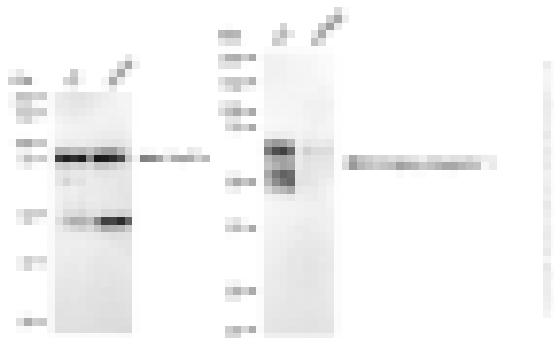
Name	KD-Validated Anti-Bridging integrator 1 Rabbit Monoclonal Antibody
Catalog #	ABG1166
Clonality	Monoclonal
Accession(Primary)	O00499
Application Note (Approx.)	WB1:5,000 FC1:2,000
Precautions	

Target information(O00499)

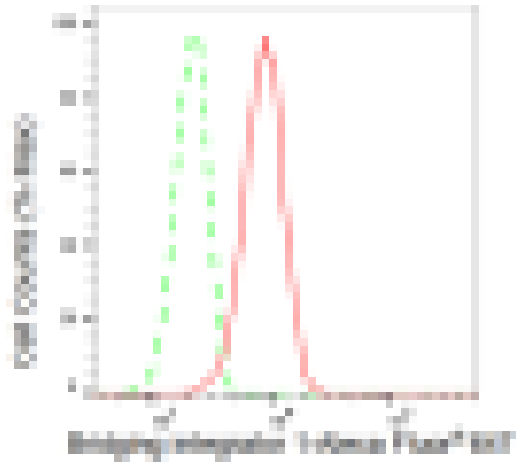
Synonyms**Gene ID****Other Names****Function****Cellular location****Note**



Western blotting analysis using anti-Bridging integrator 1 antibody (Cat#ABG1166). Total cell lysates (30 μ g) from various cell lines were loaded and separated by SDS-PAGE. The blot was incubated with anti-Bridging integrator 1 antibody (Cat#ABG1166, 1:5,000) and HRP-conjugated goat anti-rabbit secondary antibody respectively.



Western blotting analysis using anti-Bridging integrator 1 antibody (Cat#ABG1166). Bridging integrator 1 expression in wild type (WT) and Bridging integrator 1 shRNA knockdown (KD) HeLa cells with 30 μ g of total cell lysates. Hsp90 ? serves as a loading control. The blot was incubated with anti-Bridging integrator 1 antibody (Cat#ABG1166, 1:5,000) and HRP-conjugated goat anti-rabbit secondary antibody respectively.



Flow cytometric analysis of Bridging integrator 1 expression in C2C12 cells using Bridging integrator 1 antibody (Cat#ABG1166, 1:2,000). Green, isotype control; red, Bridging integrator 1.