

# KD-Validated Anti-BTF3 Rabbit Monoclonal Antibody

*Rabbit monoclonal antibody*

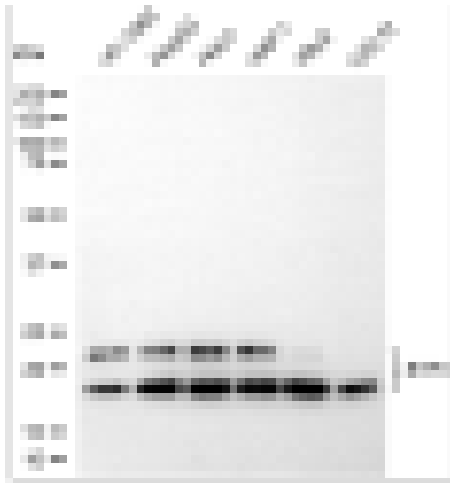
ABG1980

## Product Overview

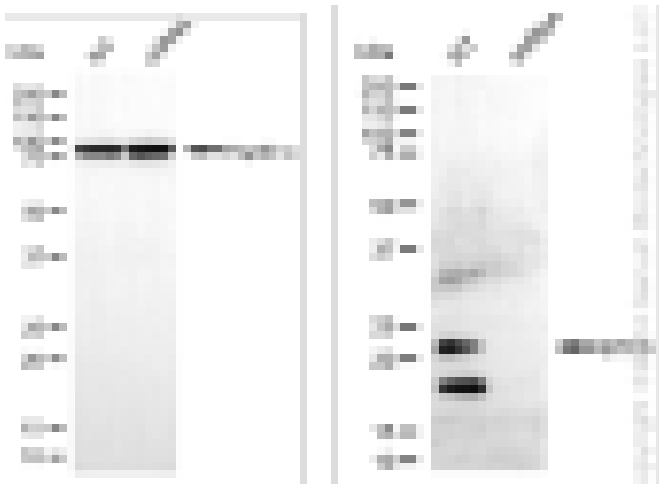
<b>Name</b>	KD-Validated Anti-BTF3 Rabbit Monoclonal Antibody
<b>Catalog #</b>	ABG1980
<b>Clonality</b>	Monoclonal
<b>Accession(Primary)</b>	P20290
<b>Application Note (Approx.)</b>	WB1:5,000 FC1:2,000 ICC1:1,000
<b>Precautions</b>	

## Target information(P20290)

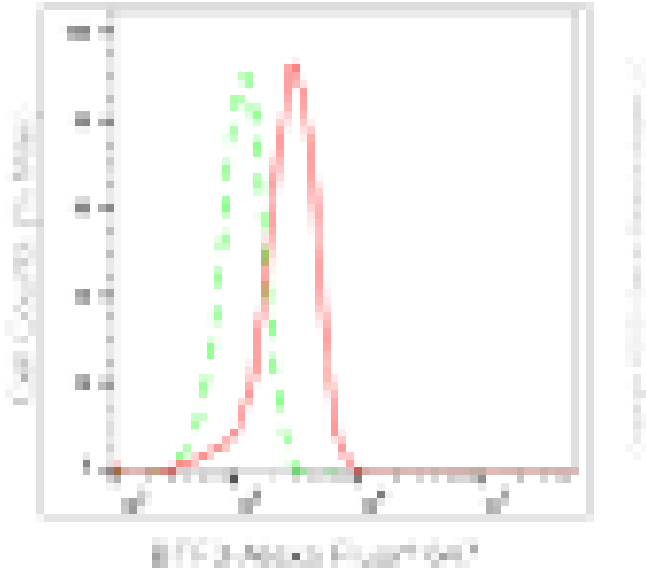
**Synonyms****Gene ID****Other Names****Function****Cellular location****Note**



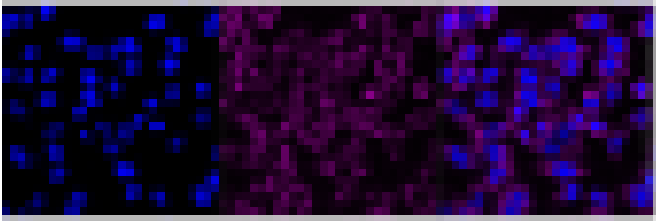
Western blotting analysis using anti-BTF3 antibody (Cat#ABG1980). Total cell lysates (30 µg) from various cell lines were loaded and separated by SDS-PAGE. The blot was incubated with anti-BTF3 antibody (Cat#ABG1980, 1:5,000) and HRP-conjugated goat anti-rabbit secondary antibody respectively.



Western blotting analysis using anti-BTF3 antibody (Cat#ABG1980). BTF3 expression in wild-type (WT) and BTF3 shRNA knockdown (KD) HeLa cells with 20 µg of total cell lysates. Hsp90 serves as a loading control. The blot was incubated with anti-BTF3 antibody (Cat#ABG1980, 1:5,000) and HRP-conjugated goat anti-rabbit secondary antibody respectively.



Flow cytometric analysis of BTF3 expression in HepG2 cells using anti-BTF3 antibody (Cat#ABG1980, 1:2,000). Green, isotype control; red, BTF3.



Immunocytochemical staining of HepG2 cells with anti-BTF3 antibody (Cat#ABG1980, 1:1,000). Nuclei were stained blue with DAPI; BTF3 was stained magenta with Alexa Fluor® 647. Images were taken using Leica stellaris 5. Protein abundance based on laser Intensity and smart gain: Medium. Scale bar, 20  $\mu$ m.

---