

KD-Validated Anti-BCAM Rabbit Monoclonal Antibody

Rabbit monoclonal Antibody

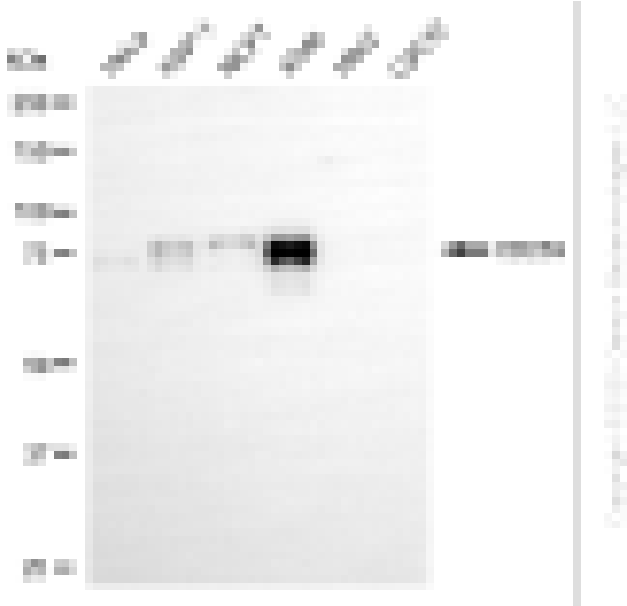
ABG2216

Product Overview

| | |
|-----------------------------------|---|
| Name | KD-Validated Anti-BCAM Rabbit Monoclonal Antibody |
| Catalog # | ABG2216 |
| Clonality | Monoclonal |
| Accession(Primary) | P50895 |
| Application Note (Approx.) | WB1:5,000 |
| Precautions | |

Target information(P50895)

Synonyms**Gene ID****Other Names****Function****Cellular location****Note**



Western blotting analysis using anti-CD239 antibody (Cat#ABG2216). Total cell lysates (30 µg) from various cell lines were loaded and separated by SDS-PAGE. The blot was incubated with anti-CD239 antibody (Cat#ABG2216, 1:5,000) and HRP-conjugated goat anti-rabbit secondary antibody respectively.



Western blotting analysis using anti-CD239 antibody (Cat#ABG2216). CD239 expression in wild-type (WT) and BCAM shRNA knockdown (KD) HeLa cells with 20 μ g of total cell lysates. Hsp90 serves as a loading control. The blot was incubated with anti-CD239 antibody (Cat#ABG2216, 1:5,000) and HRP-conjugated goat anti-rabbit secondary antibody respectively.