

# KD-Validated Anti-BAZ1B Rabbit Monoclonal Antibody

*Rabbit monoclonal antibody*

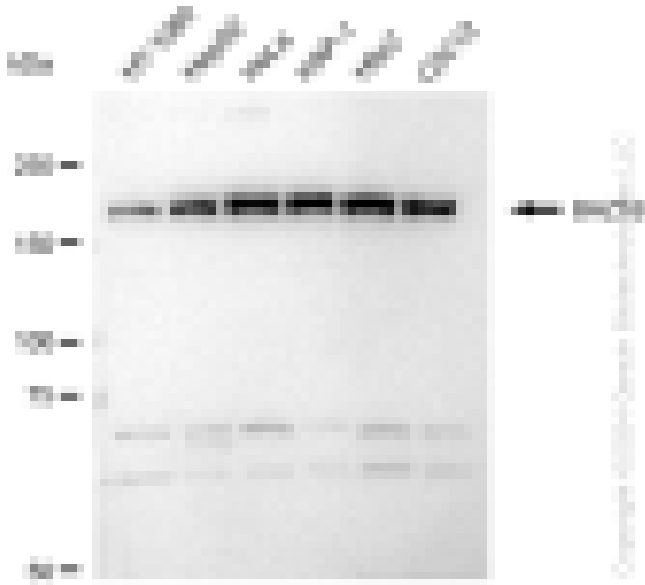
ABG1346

## Product Overview

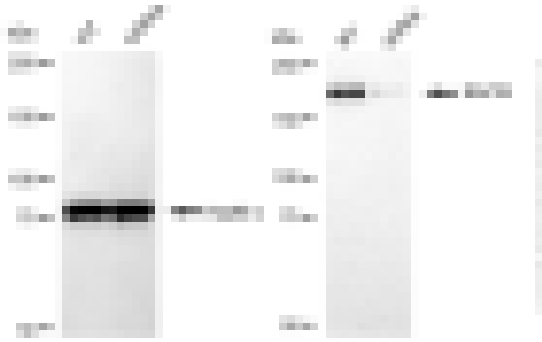
<b>Name</b>	KD-Validated Anti-BAZ1B Rabbit Monoclonal Antibody		
<b>Catalog #</b>	ABG1346		
<b>Clonality</b>	Monoclonal		
<b>Accession(Primary)</b>	Q9UIG0		
<b>Application Note (Approx.)</b>	WB1:5,000	FC1:2,000	ICC1:1,000
<b>Precautions</b>			

## Target information(Q9UIG0)

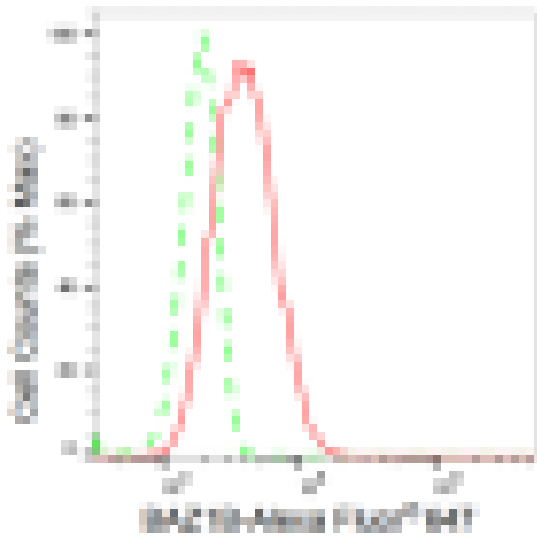
**Synonyms****Gene ID****Other Names****Function****Cellular location****Note**



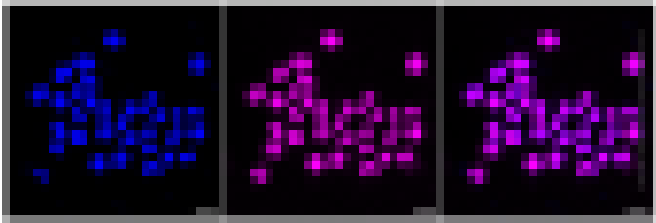
Western blotting analysis using anti-BAZ1B antibody (Cat#ABG1346). Total cell lysates (30 µg) from various cell lines were loaded and separated by SDS-PAGE. The blot was incubated with anti-BAZ1B antibody (Cat#ABG1346, 1:5,000) and HRP-conjugated goat anti-rabbit secondary antibody respectively.



Western blotting analysis using anti-BAZ1B antibody (Cat#ABG1346). BAZ1B expression in wild type (WT) and BAZ1B shRNA knockdown (KD) HeLa cells with 30  $\mu$ g of total cell lysates. Hsp90 serves as a loading control. The blot was incubated with anti-BAZ1B antibody (Cat#ABG1346, 1:5,000) and HRP-conjugated goat anti-rabbit secondary antibody respectively.



Flow cytometric analysis of BAZ1B expression in HeLa cells using BAZ1B antibody (Cat#ABG1346, 1:2,000). Green, isotype control; red, BAZ1B.



Immunocytochemical staining of HeLa cells with BAZ1B antibody (Cat#ABG1346, 1:1,000). Nuclei were stained blue with DAPI; BAZ1B was stained magenta with Alexa Fluor® 647. Images were taken using Leica stellaris 5. Protein abundance based on laser Intensity and smart gain: Medium. Scale bar: 20  $\mu$ m.

---