

KD-Validated Anti-Amyloid beta precursor protein Rabbit

Monoclonal Antibody
Rabbit monoclonal antibody

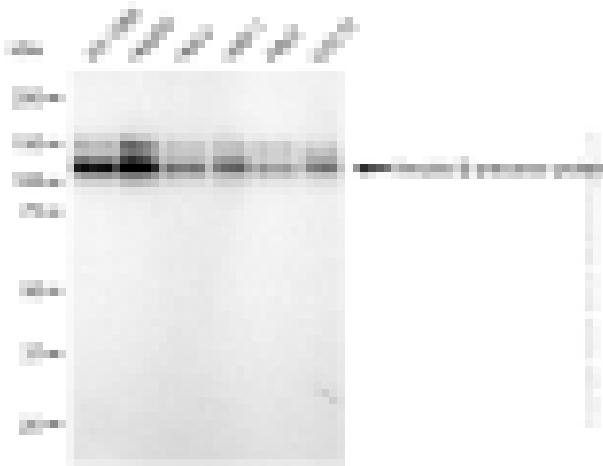
ABG2381

Product Overview

Name	KD-Validated Anti-Amyloid beta precursor protein Rabbit Monoclonal Antibody
Catalog #	ABG2381
Clonality	Monoclonal
Accession(Primary)	P05067
Application Note (Approx.)	WB1:5,000 FC1:2,000 ICC1:1,000
Precautions	

Target information(P05067)

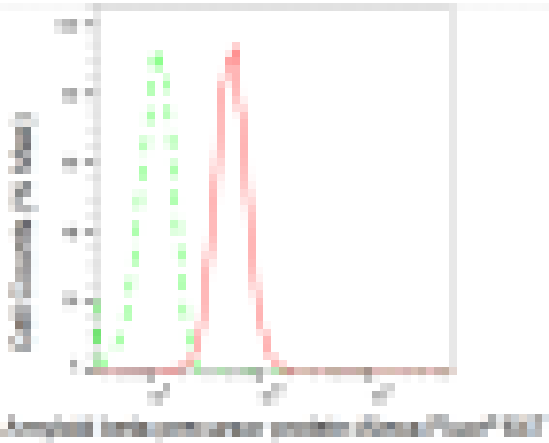
Synonyms**Gene ID****Other Names****Function****Cellular location****Note**



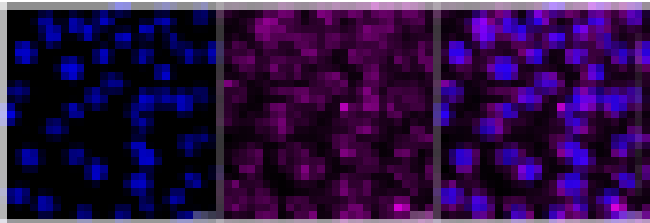
Western blotting analysis using anti-Amyloid beta precursor protein antibody (Cat#ABG2381). Total cell lysates (30 μ g) from various cell lines were loaded and separated by SDS-PAGE. The blot was incubated with anti-Amyloid beta precursor protein antibody (Cat#ABG2381, 1:5,000) and HRP-conjugated goat anti-rabbit secondary antibody respectively.



Western blotting analysis using anti-Amyloid beta precursor protein antibody (Cat#ABG2381). Amyloid beta precursor protein expression in wild type (WT) and amyloid beta precursor protein shRNA knockdown (KD) HeLa cells with 30 μ g of total cell lysates. β -Tubulin serves as a loading control. The blot was incubated with anti-Amyloid beta precursor protein antibody (Cat#ABG2381, 1:5,000) and HRP-conjugated goat anti-rabbit secondary antibody respectively.



Flow cytometric analysis of Amyloid beta precursor protein expression in HepG2 cells using Amyloid beta precursor protein antibody (Cat#ABG2381, 1:2,000). Green, isotype control; red, Amyloid beta precursor protein.



Immunocytochemical staining of HT-1080 cells with Amyloid beta precursor protein antibody (Cat#ABG2381, 1:1,000). Nuclei were stained blue with DAPI; Amyloid beta precursor protein was stained magenta with Alexa Fluor® 647. Images were taken using Leica stellaris 5. Protein abundance based on laser Intensity and smart gain: Medium. Scale bar: 20 μ m.