

KD-Validated Anti-Amyloid beta precursor like protein 2

Rabbit monoclonal antibody

ABG1367

Product Overview

Name	KD-Validated Anti-Amyloid beta precursor like protein 2 Rabbit Monoclonal Antibody
Catalog #	ABG1367
Clonality	Monoclonal
Accession(Primary)	Q06481
Application Note (Approx.)	WB1:5,000 FC1:2,000 ICC1:1,000
Precautions	

Target information(Q06481)

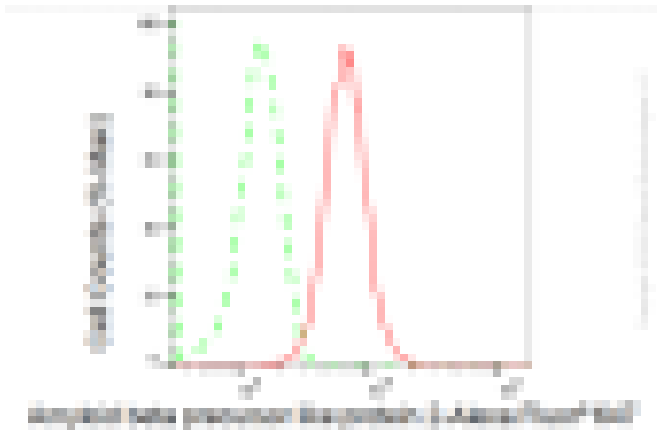
Synonyms**Gene ID****Other Names****Function****Cellular location****Note**



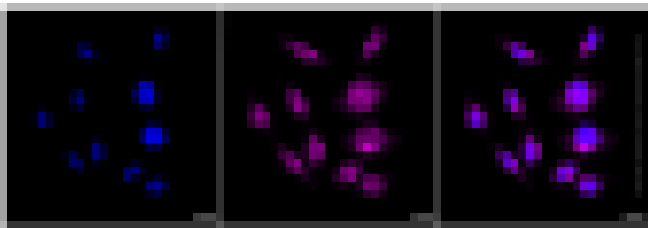
Western blotting analysis using anti-Amyloid beta precursor like protein 2 antibody (Cat#ABG1367). Total cell lysates (30 μ g) from various cell lines were loaded and separated by SDS-PAGE. The blot was incubated with anti-Amyloid beta precursor like protein 2 antibody (Cat#ABG1367, 1:5,000) and HRP-conjugated goat anti-rabbit secondary antibody respectively.



Western blotting analysis using anti-Amyloid beta precursor like protein 2 antibody (Cat#ABG1367). Amyloid beta precursor like protein 2 expression in wild type (WT) and amyloid beta precursor like protein 2 shRNA knockdown (KD) HeLa cells with 30 μ g of total cell lysates. α -Tubulin serves as a loading control. The blot was incubated with anti-Amyloid beta precursor like protein 2 antibody (Cat#ABG1367, 1:5,000) and HRP-conjugated goat anti-rabbit secondary antibody respectively.



Flow cytometric analysis of Amyloid beta precursor like protein 2 expression in HepG2 cells using Amyloid beta precursor like protein 2 antibody (Cat#ABG1367, 1:2,000). Green, isotype control; red, Amyloid beta precursor like protein 2.



Immunocytochemical staining of HepG2 cells with Amyloid beta precursor like protein 2 antibody (Cat#ABG1367, 1:1,000). Nuclei were stained blue with DAPI; Amyloid beta precursor like protein 2 was stained magenta with Alexa Fluor® 647. Images were taken using Leica stellaris 5. Protein abundance based on laser Intensity and smart gain: High. Scale bar: 20 μ m.