

KD-Validated Anti-Adiponectin receptor 1 Rabbit Monoclonal Antibody

Rabbit monoclonal antibody

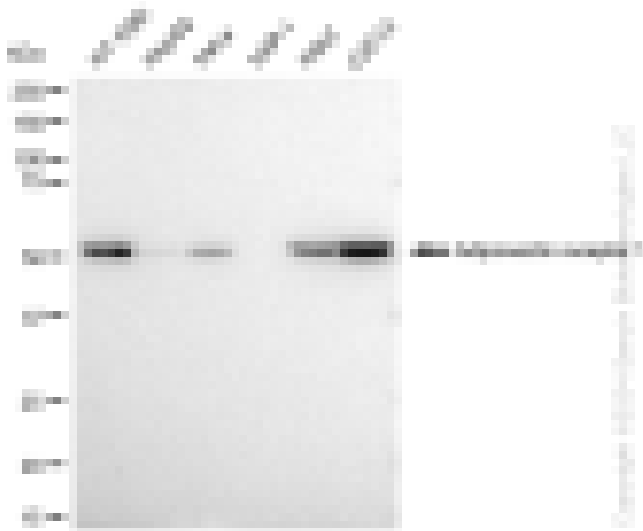
ABG1312

Product Overview

| | |
|-----------------------------------|---------------------------------------------------------------------|
| Name | KD-Validated Anti-Adiponectin receptor 1 Rabbit Monoclonal Antibody |
| Catalog # | ABG1312 |
| Clonality | Monoclonal |
| Accession(Primary) | Q96A54 |
| Application Note (Approx.) | WB1:5,000 FC1:2,000 ICC1:1,000 |
| Precautions | |

Target information(Q96A54)

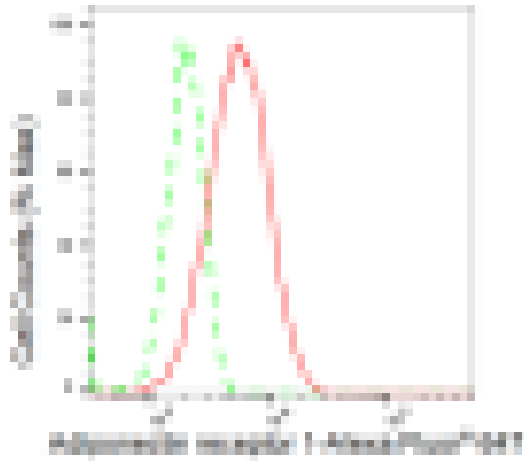
Synonyms**Gene ID****Other Names****Function****Cellular location****Note**



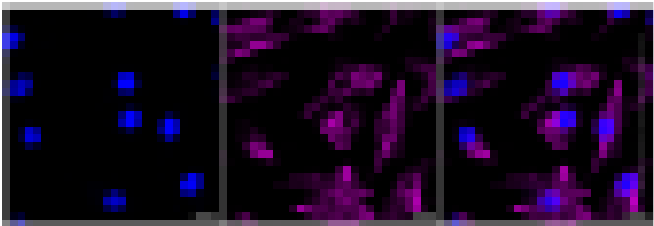
Western blotting analysis using anti-Adiponectin receptor 1 antibody (Cat#ABG1312). Total cell lysates (30 µg) from various cell lines were loaded and separated by SDS-PAGE. The blot was incubated with anti-Adiponectin receptor 1 antibody (Cat#ABG1312, 1:5,000) and HRP-conjugated goat anti-rabbit secondary antibody respectively.



Western blotting analysis using anti-Adiponectin receptor 1 antibody (Cat#ABG1312). Adiponectin receptor 1 expression in wild type (WT) and Adiponectin receptor 1 shRNA knockdown (KD) HeLa cells with 30 µg of total cell lysates. Hsp90 serves as a loading control. The blot was incubated with anti-Adiponectin receptor 1 antibody (Cat#ABG1312, 1:5,000) and HRP-conjugated goat anti-rabbit secondary antibody respectively.



Flow cytometric analysis of Adiponectin receptor 1 expression in C2C12 cells using Adiponectin receptor 1 antibody (Cat#ABG1312, 1:2000). Green, isotype control; red, Adiponectin receptor 1.



Immunocytochemical staining of C2C12 cells with Adiponectin receptor 1 antibody (Cat#ABG1312, 1:1,000). Nuclei were stained blue with DAPI; Adiponectin receptor 1 was stained magenta with Alexa Fluor® 647. Images were taken using Leica stellaris 5. Protein abundance based on laser Intensity and smart gain: High. Scale bar: 20 μ m.