

KD-Validated Anti-Actin like 6A Rabbit Monoclonal Antibody

Rabbit monoclonal antibody

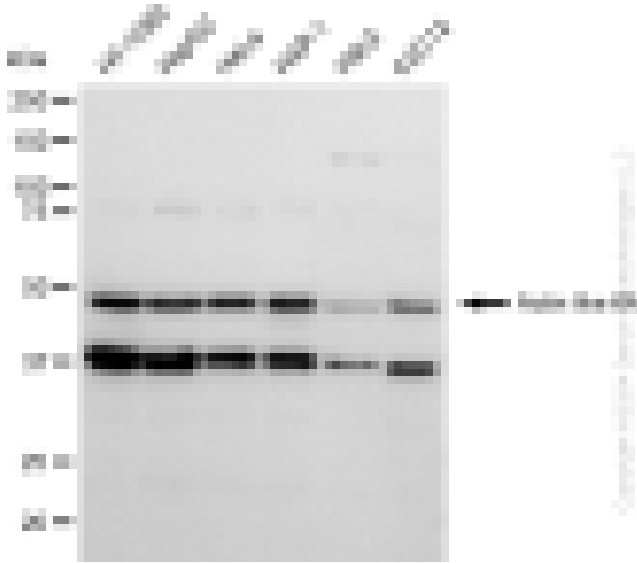
ABG2348

Product Overview

Name	KD-Validated Anti-Actin like 6A Rabbit Monoclonal Antibody
Catalog #	ABG2348
Clonality	Monoclonal
Accession(Primary)	O96019
Application Note (Approx.)	WB1:5,000 FC1:2,000 ICC1:1,000
Precautions	

Target information(O96019)

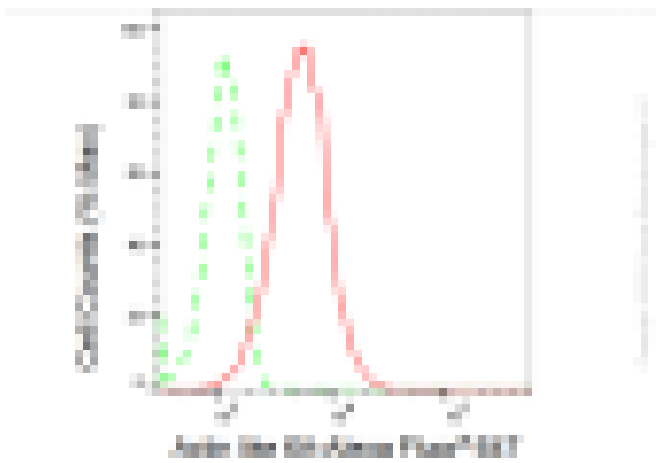
Synonyms**Gene ID****Other Names****Function****Cellular location****Note**



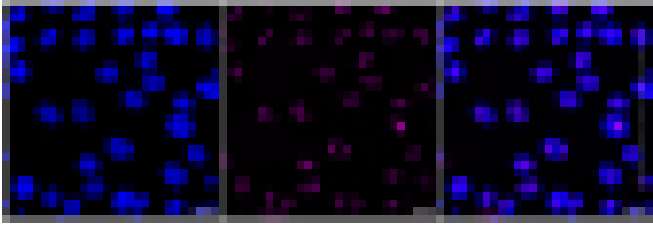
Western blotting analysis using anti-Actin like 6A antibody (Cat#ABG2348). Total cell lysates (30 μ g) from various cell lines were loaded and separated by SDS-PAGE. The blot was incubated with anti-Actin like 6A antibody (Cat#ABG2348, 1:5,000) and HRP-conjugated goat anti-rabbit secondary antibody respectively.



Western blotting analysis using anti-Actin like 6A antibody (Cat#ABG2348). Actin like 6A expression in wild type (WT) and actin like 6A shRNA knockdown (KD) HeLa cells with 30 μ g of total cell lysates. β -Tubulin serves as a loading control. The blot was incubated with anti-Actin like 6A antibody (Cat#ABG2348, 1:5,000) and HRP-conjugated goat anti-rabbit secondary antibody respectively.



Flow cytometric analysis of Actin like 6A expression in HepG2 cells using Actin like 6A antibody (Cat#ABG2348, 1:2,000). Green, isotype control; red, Actin like 6A.



Immunocytochemical staining of HT-1080 cells with Actin like 6A antibody (Cat#ABG2348, 1:1,000). Nuclei were stained blue with DAPI; Actin like 6A was stained magenta with Alexa Fluor® 647. Images were taken using Leica stellaris 5. Protein abundance based on laser Intensity and smart gain: Medium. Scale bar: 20 μ m.
