

KD-Validated Anti-Acetyl-CoA acyltransferase 2 Rabbit Monoclonal Antibody

Rabbit monoclonal antibody

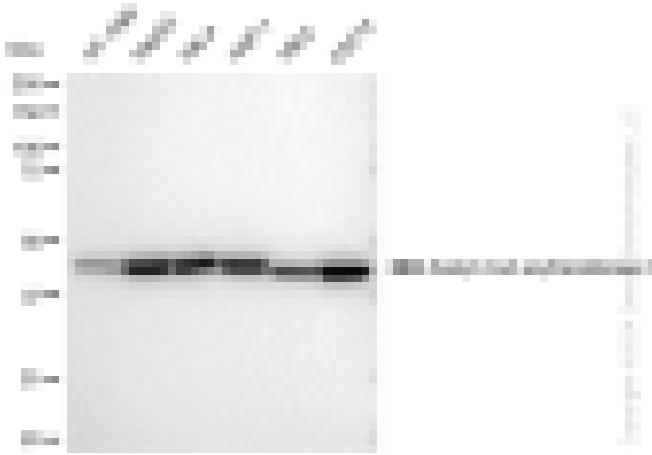
ABG1304

Product Overview

Name	KD-Validated Anti-Acetyl-CoA acyltransferase 2 Rabbit Monoclonal Antibody
Catalog #	ABG1304
Clonality	Monoclonal
Accession(Primary)	P42765
Application Note (Approx.)	WB1:5,000 FC1:2,000 ICC1:1,000
Precautions	

Target information(P42765)

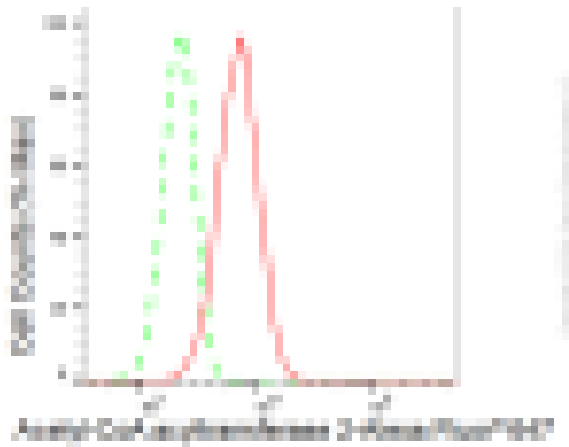
Synonyms**Gene ID****Other Names****Function****Cellular location****Note**



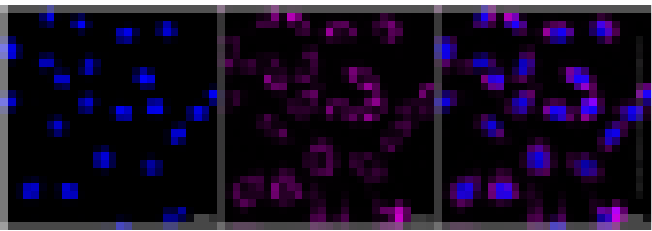
Western blotting analysis using anti-Acetyl-CoA acyltransferase 2 antibody (Cat#ABG1304). Total cell lysates (30 µg) from various cell lines were loaded and separated by SDS-PAGE. The blot was incubated with anti-Acetyl-CoA acyltransferase 2 antibody (Cat#ABG1304, 1:5,000) and HRP-conjugated goat anti-rabbit secondary antibody respectively.



Western blotting analysis using anti-Acetyl-CoA acyltransferase 2 antibody (Cat#ABG1304). Acetyl-CoA acyltransferase 2 expression in wild type (WT) and Acetyl-CoA acyltransferase 2 shRNA knockdown (KD) HeLa cells with 30 µg of total cell lysates. Hsp90 serves as a loading control. The blot was incubated with anti-Acetyl-CoA acyltransferase 2 antibody (Cat#ABG1304, 1:5,000) and HRP-conjugated goat anti-rabbit secondary antibody respectively.



Flow cytometric analysis of Acetyl-CoA acyltransferase 2 expression in C2C12 cells using Acetyl-CoA acyltransferase 2 antibody (Cat#ABG1304, 1:2,000). Green, isotype control; red, Acetyl-CoA acyltransferase 2.



Immunocytochemical staining of C2C12 cells with Acetyl-CoA acyltransferase 2 antibody (Cat#ABG1304, 1:1,000). Nuclei were stained blue with DAPI; Acetyl-CoA acyltransferase 2 was stained magenta with Alexa Fluor® 647. Images were taken using Leica stellaris 5. Protein abundance based on laser Intensity and smart gain: High. Scale bar: 20 μ m.