

# KD-Validated Anti-Acetyl-CoA acetyltransferase 2 Rabbit Monoclonal Antibody

Rabbit monoclonal antibody

ABG1475

## Product Overview

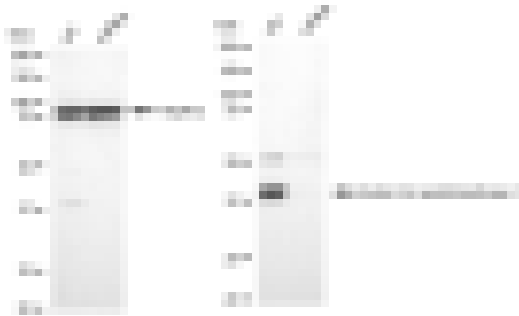
<b>Name</b>	KD-Validated Anti-Acetyl-CoA acetyltransferase 2 Rabbit Monoclonal Antibody
<b>Catalog #</b>	ABG1475
<b>Clonality</b>	Monoclonal
<b>Accession(Primary)</b>	Q9BWD1
<b>Application Note (Approx.)</b>	WB1:5,000 FC1:2,000
<b>Precautions</b>	

## Target information(Q9BWD1)

**Synonyms****Gene ID****Other Names****Function****Cellular location****Note**



Western blotting analysis using anti-Acetyl-CoA acetyltransferase 2 antibody (Cat#ABG1475). Total cell lysates (30  $\mu$ g) from various cell lines were loaded and separated by SDS-PAGE. The blot was incubated with anti-Acetyl-CoA acetyltransferase 2 antibody (Cat#ABG1475, 1:5,000) and HRP-conjugated goat anti-rabbit secondary antibody respectively.



Western blotting analysis using anti-Acetyl-CoA acetyltransferase 2 antibody (Cat#ABG1475). Acetyl-CoA acetyltransferase 2 expression in wild type (WT) and Acetyl-CoA acetyltransferase 2 shRNA knockdown (KD) HeLa cells with 30  $\mu$ g of total cell lysates. Hsp90 serves as a loading control. The blot was incubated with anti-Acetyl-CoA acetyltransferase 2 antibody (Cat#ABG1475, 1:5,000) and HRP-conjugated goat anti-rabbit secondary antibody respectively.

