

KD-Validated Anti-AXL Rabbit Monoclonal Antibody

Rabbit monoclonal antibody

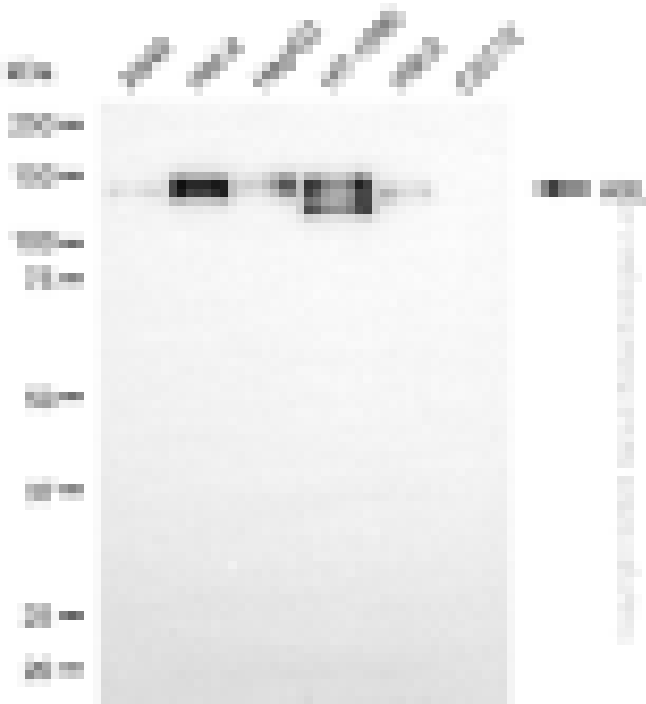
ABG1979

Product Overview

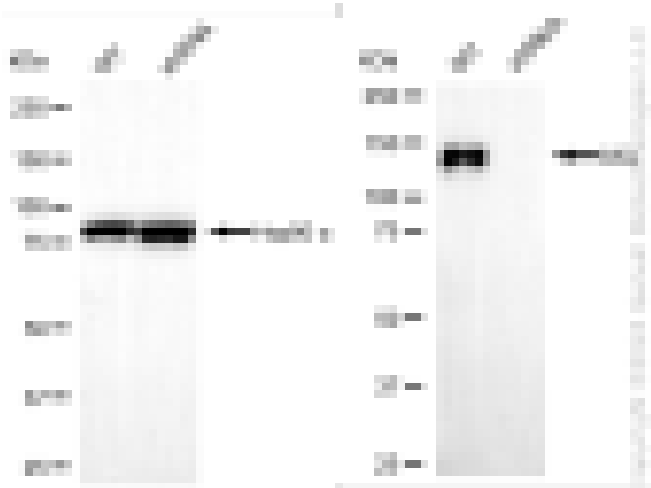
Name	KD-Validated Anti-AXL Rabbit Monoclonal Antibody	
Catalog #	ABG1979	
Clonality	Monoclonal	
Accession(Primary)	P30530	
Application Note (Approx.)	WB1:5,000	ICC1:1,000
Precautions		

Target information(P30530)

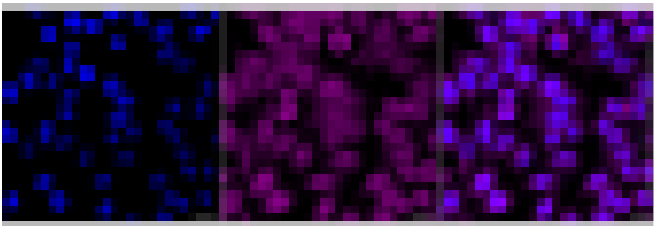
Synonyms**Gene ID****Other Names****Function****Cellular location****Note**



Western blotting analysis using anti-AXL antibody (Cat#ABG1979). Total cell lysates (30 µg) from various cell lines were loaded and separated by SDS-PAGE. The blot was incubated with anti-AXL antibody (Cat#ABG1979, 1:5,000) and HRP-conjugated goat anti-rabbit secondary antibody respectively.



Western blotting analysis using anti-AXL antibody (Cat#ABG1979). AXL expression in wild-type (WT) and AXL shRNA knockdown (KD) HeLa cells with 20 μ g of total cell lysates. Hsp90 serves as a loading control. The blot was incubated with anti-AXL antibody (Cat#ABG1979, 1:5,000) and HRP-conjugated goat anti-rabbit secondary antibody respectively.



Immunocytochemical staining of HepG2 cells with anti-AXL antibody (Cat#ABG1979, 1:1,000). Nuclei were stained blue with DAPI; AXL was stained magenta with Alexa Fluor® 647. Images were taken using Leica stellaris 5. Protein abundance based on laser Intensity and smart gain: Medium. Scale bar, 20 μ m.