

KD-Validated Anti-AP2M1 Rabbit Monoclonal Antibody

Rabbit monoclonal antibody

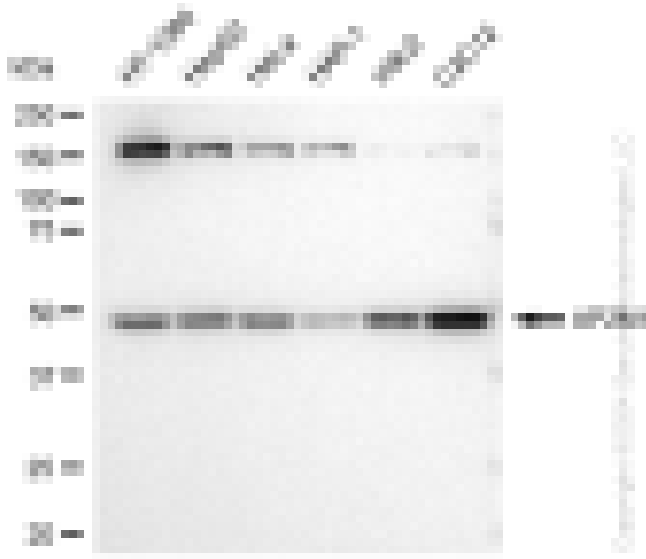
ABG1317

Product Overview

Name	KD-Validated Anti-AP2M1 Rabbit Monoclonal Antibody	
Catalog #	ABG1317	
Clonality	Monoclonal	
Accession(Primary)	Q96CW1	
Application Note (Approx.)	WB1:5,000	ICC1:1,000
Precautions		

Target information(Q96CW1)

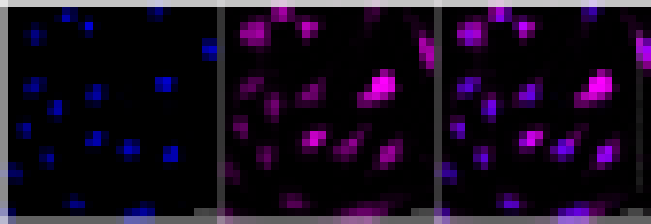
Synonyms**Gene ID****Other Names****Function****Cellular location****Note**



Western blotting analysis using anti-AP2M1 antibody (Cat#ABG1317). Total cell lysates (30 μ g) from various cell lines were loaded and separated by SDS-PAGE. The blot was incubated with anti-AP2M1 antibody (Cat#ABG1317, 1:5,000) and HRP-conjugated goat anti-rabbit secondary antibody respectively.



Western blotting analysis using anti-AP2M1 antibody (Cat#ABG1317). AP2M1 expression in wild type (WT) and AP2M1 shRNA knockdown (KD) HeLa cells with 30 µg of total cell lysates. Hsp90 serves as a loading control. The blot was incubated with anti-AP2M1 antibody (Cat#ABG1317, 1:5,000) and HRP-conjugated goat anti-rabbit secondary antibody respectively.



Immunocytochemical staining of C2C12 cells with AP2M1 antibody (Cat#ABG1317, 1:1,000). Nuclei were stained blue with DAPI; AP2M1 was stained magenta with Alexa Fluor® 647. Images were taken using Leica stellaris 5. Protein abundance based on laser Intensity and smart gain: Low. Scale bar: 20 µm.