

KD-Validated Anti-ACSL4 Rabbit Monoclonal Antibody

Rabbit monoclonal antibody

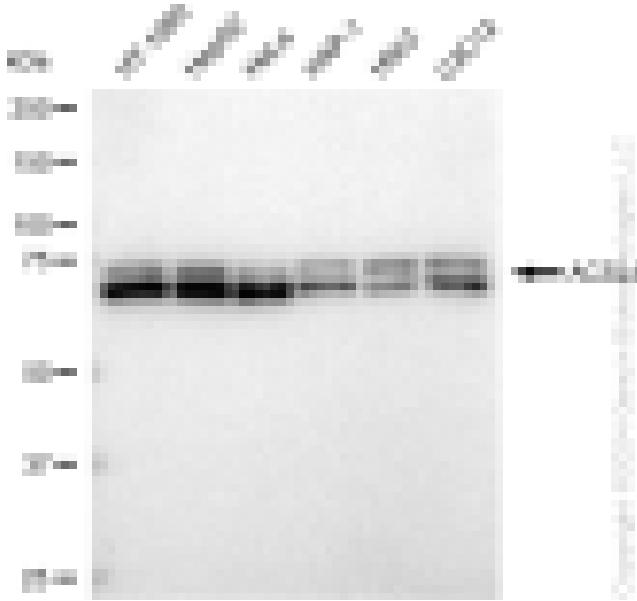
ABG1150

Product Overview

Name	KD-Validated Anti-ACSL4 Rabbit Monoclonal Antibody		
Catalog #	ABG1150		
Clonality	Monoclonal		
Accession(Primary)	O60488		
Application Note (Approx.)	WB1:5,000	FC1:2,000	ICC1:1,000
Precautions			

Target information(O60488)

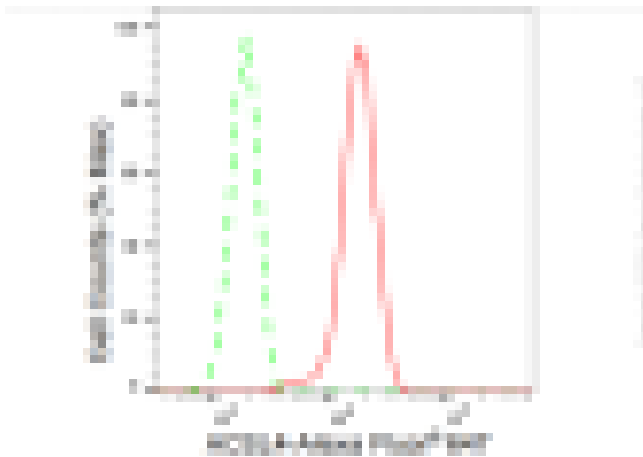
Synonyms**Gene ID****Other Names****Function****Cellular location****Note**



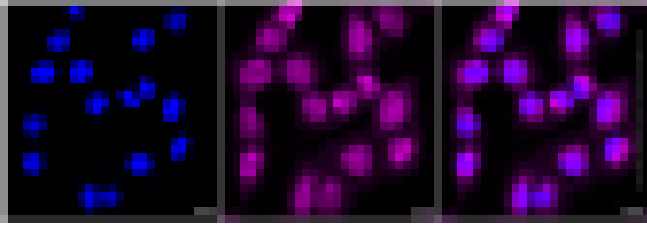
Western blotting analysis using anti-ACSL4 antibody (Cat#ABG1150). Total cell lysates (30 µg) from various cell lines were loaded and separated by SDS-PAGE. The blot was incubated with anti-ACSL4 antibody (Cat#ABG1150, 1:5,000) and HRP-conjugated goat anti-rabbit secondary antibody respectively.



Western blotting analysis using anti-ACSL4 antibody (Cat#ABG1150). ACSL4 expression in wild type (WT) and ACSL4 shRNA knockdown (KD) HeLa cells with 30 μ g of total cell lysates. β -Tubulin serves as a loading control. The blot was incubated with anti-ACSL4 antibody (Cat#ABG1150, 1:5,000) and HRP-conjugated goat anti-rabbit secondary antibody respectively.



Flow cytometric analysis of ACSL4 expression in HT-1080 cells using ACSL4 antibody (Cat#ABG1150, 1:2,000). Green, isotype control; red, ACSL4.



Immunocytochemical staining of HT-1080 cells with ACSL4 antibody (Cat#ABG1150, 1:1,000). Nuclei were stained blue with DAPI; ACSL4 was stained magenta with Alexa Fluor® 647. Images were taken using Leica stellaris 5. Protein abundance based on laser Intensity and smart gain: Medium. Scale bar: 20 μ m.