

# KD-Validated Anti-ABCG2 Rabbit Monoclonal Antibody

*Rabbit monoclonal antibody*

ABG1189

## Product Overview

Name	KD-Validated Anti-ABCG2 Rabbit Monoclonal Antibody		
Catalog #	ABG1189		
Clonality	Monoclonal		
Accession(Primary)	Q9UNQ0		
Application Note (Approx.)	WB1:5,000	FC1:2,000	ICC1:1,000
Precautions			

## Target information(Q9UNQ0)

Synonyms

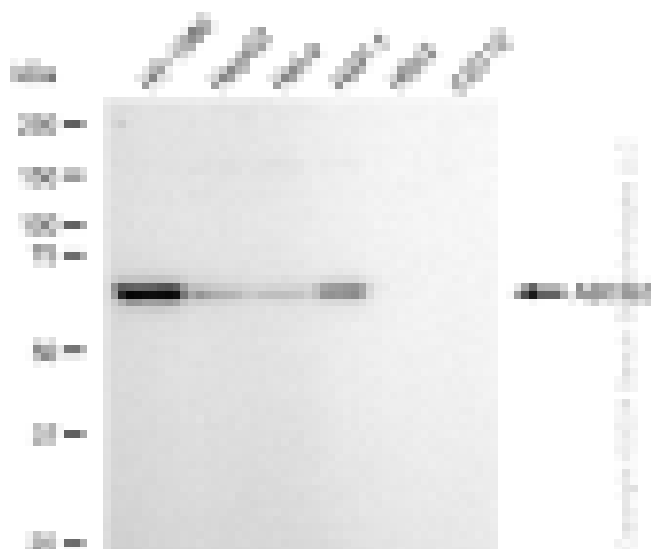
Gene ID

Other Names

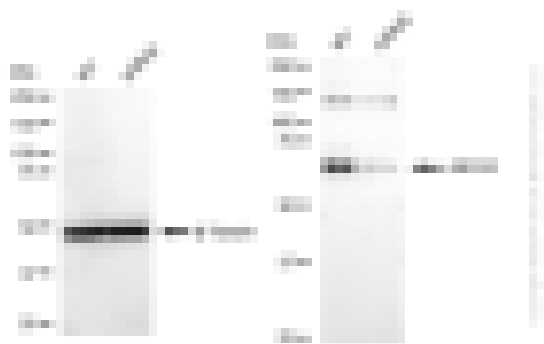
Function

Cellular location

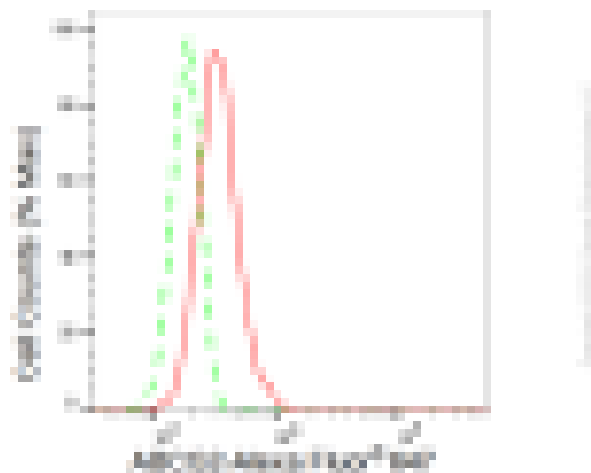
Note



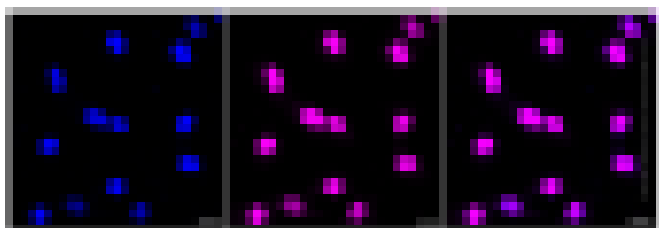
Western blotting analysis using anti-ABCG2 antibody (Cat#ABG1189). Total cell lysates (30 µg) from various cell lines were loaded and separated by SDS-PAGE. The blot was incubated with anti-ABCG2 antibody (Cat#ABG1189, 1:5,000) and HRP-conjugated goat anti-rabbit secondary antibody respectively.



Western blotting analysis using anti-ABCG2 antibody (Cat#ABG1189). ABCG2 expression in wild type (WT) and ABCG2 shRNA knockdown (KD) HeLa cells with 30 µg of total cell lysates. β-Tubulin serves as a loading control. The blot was incubated with anti-ABCG2 antibody (Cat#ABG1189, 1:5,000) and HRP-conjugated goat anti-rabbit secondary antibody respectively.



Flow cytometric analysis of ABCG2 expression in HT-1080 cells using ABCG2 antibody (Cat#ABG1189, 1:2,000). Green, isotype control; red, ABCG2.



Immunocytochemical staining of HT-1080 cells with ABCG2 antibody (Cat#ABG1189, 1:1,000). Nuclei were stained blue with DAPI; ABCG2 was stained magenta with Alexa Fluor® 647. Images were taken using Leica stellaris 5. Protein abundance based on laser Intensity and smart gain: Medium. Scale bar: 20  $\mu$ m.