

KD-Validated Anti-A-kinase anchoring protein 8 Rabbit Monoclonal Antibody

Rabbit monoclonal antibody

ABG1158

Product Overview

Name	KD-Validated Anti-A-kinase anchoring protein 8 Rabbit Monoclonal Antibody		
Catalog #	ABG1158		
Clonality	Monoclonal		
Accession(Primary)	O43823		
Application Note (Approx.)	WB1:5,000	FC1:2,000	ICC1:1,000
Precautions			

Target information(O43823)

Synonyms

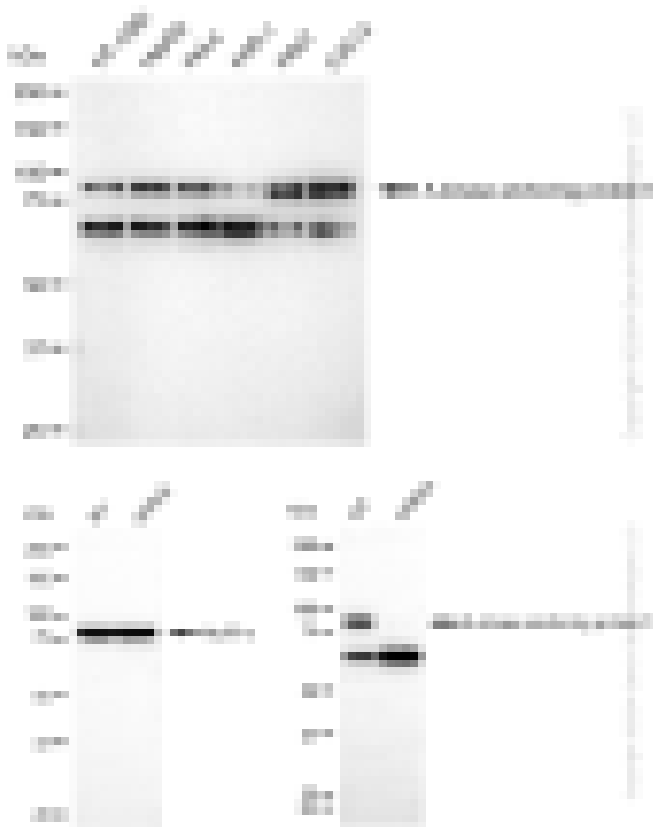
Gene ID

Other Names

Function

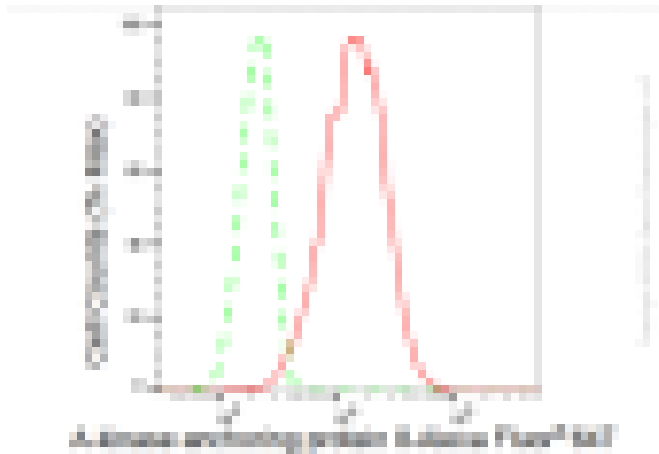
Cellular location

Note

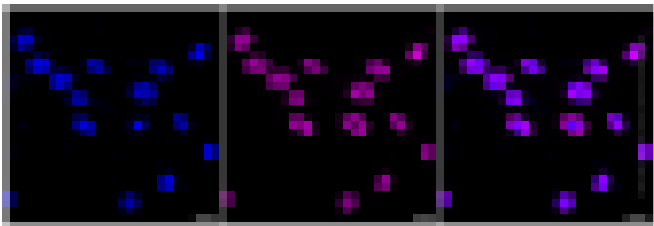


Western blotting analysis using anti-A-kinase anchoring protein 8 antibody (Cat#ABG1158). Total cell lysates (30 μ g) from various cell lines were loaded and separated by SDS-PAGE. The blot was incubated with anti-A-kinase anchoring protein 8 antibody (Cat#ABG1158, 1:5,000) and HRP-conjugated goat anti-rabbit secondary antibody respectively.

Western blotting analysis using anti-A-kinase anchoring protein 8 antibody (Cat#ABG1158). A-kinase anchoring protein 8 expression in wild type (WT) and A-kinase anchoring protein 8 shRNA knockdown (KD) HeLa cells with 30 μ g of total cell lysates. β -Tubulin serves as a loading control. The blot was incubated with anti-A-kinase anchoring protein 8 antibody (Cat#ABG1158, 1:5,000) and HRP-conjugated goat anti-rabbit secondary antibody respectively.



Flow cytometric analysis of A-kinase anchoring protein 8 expression in C2C12 cells using A-kinase anchoring protein 8 antibody (Cat#ABG1158, 1:2,000). Green, isotype control; red, A-kinase anchoring protein 8.



Immunocytochemical staining of C2C12 cells A-kinase anchoring protein 8 antibody (Cat#ABG1158, 1:1,000). Nuclei were stained blue with DAPI; A-kinase anchoring protein 8 was stained magenta with Alexa Fluor® 647. Images were taken using Leica stellaris 5. Protein abundance based on laser Intensity and smart gain: High. Scale bar: 20 μ m.