

KD-Validated Anti-14-3-3 gamma Rabbit Monoclonal Antibody

Rabbit monoclonal antibody

ABG1013

Product Overview

Name	KD-Validated Anti-14-3-3 gamma Rabbit Monoclonal Antibody		
Catalog #	ABG1013		
Clonality	Monoclonal		
Accession(Primary)	P61981		
Application Note (Approx.)	WB1:5,000	FC1:2,000	ICC1:1,000
Precautions			

Target information(P61981)

Synonyms

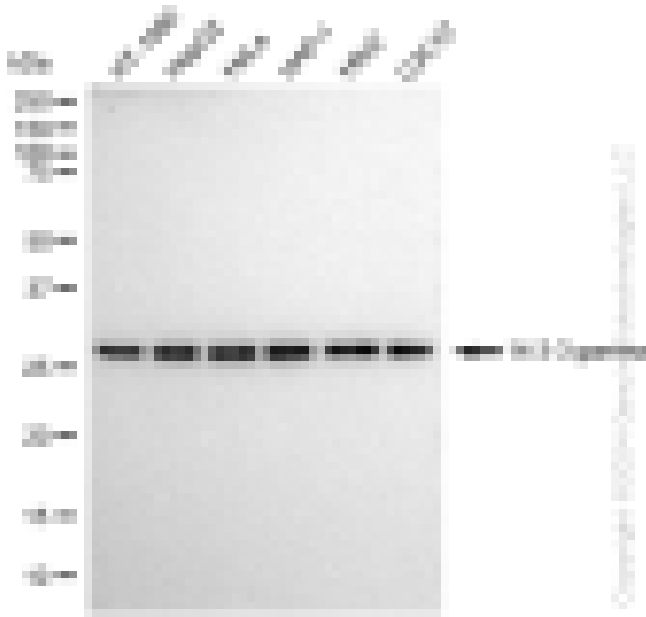
Gene ID

Other Names

Function

Cellular location

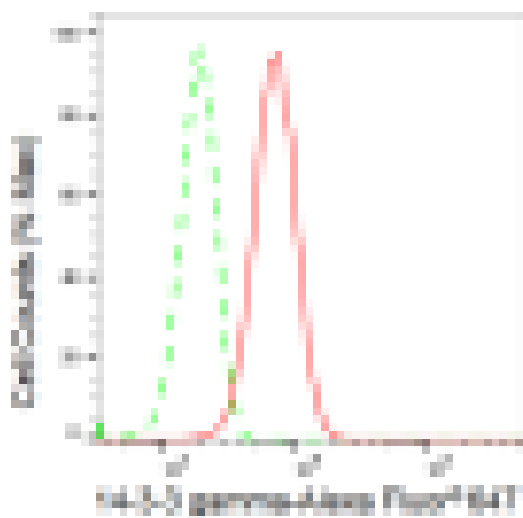
Note



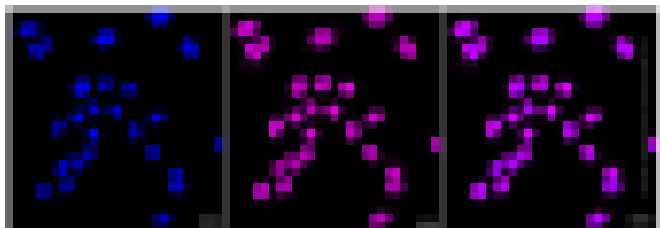
Western blotting analysis using anti-14-3-3 gamma antibody (Cat#ABG1013). Total cell lysates (30 μ g) from various cell lines were loaded and separated by SDS-PAGE. The blot was incubated with anti-14-3-3 gamma antibody (Cat#ABG1013, 1:5,000) and HRP-conjugated goat anti-rabbit secondary antibody respectively.



Western blotting analysis using anti-14-3-3 gamma antibody (Cat#ABG1013). 14-3-3 gamma expression in wild type (WT) and 14-3-3 gamma shRNA knockdown (KD) HeLa cells with 30 µg of total cell lysates. β-Tubulin serves as a loading control. The blot was incubated with anti-14-3-3 gamma antibody (Cat#ABG1013, 1:5,000) and HRP-conjugated goat anti-rabbit secondary antibody respectively.



Flow cytometric analysis of 14-3-3 gamma expression in HepG2 cells using 14-3-3 gamma antibody (Cat#ABG1013, 1:2,000). Green, isotype control; red, 14-3-3 gamma.



Immunocytochemical staining of HepG2 cells with 14-3-3 gamma antibody (Cat#ABG1013, 1:1,000). Nuclei were stained blue with DAPI; 14-3-3 gamma was stained magenta with Alexa Fluor® 647. Images were taken using Leica stellaris 5. Protein abundance based on laser Intensity and smart gain: Medium. Scale bar: 20 μ m.