

# ANTI-CD36 ANTIBODY (ABP1008)

*Rabbit Polyclonal Antibody*

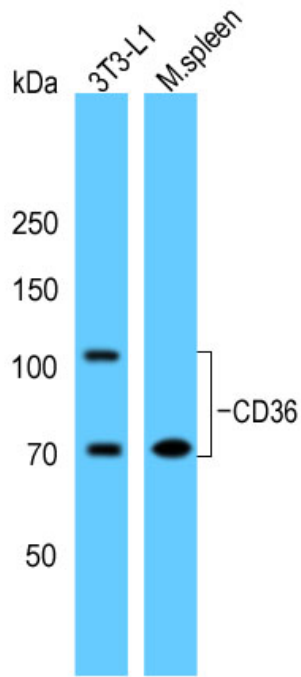
ABP1008

## Product Overview

<b>Name</b>	ANTI-CD36 ANTIBODY (ABP1008)
<b>Catalog #</b>	ABP1008
<b>Clonality</b>	Polyclonal
<b>Accession(Primary)</b>	P16671
<b>Other Accession</b>	Q08857
<b>Application Note (Approx.)</b>	WB1:1000
<b>Precautions</b>	

## Target information(P16671)

**Synonyms****Gene ID** 948**Other Names****Function****Cellular location****Note**



Samples: Mouse (3T3-L1) cell lysate and Mouse (spleen) tissue lysate. PVDF membrane was probed with Anti-CD36 Antibody (Catalog# PP1008-S1) at 1:1000 dilution, followed by HRP conjugated secondary antibody. Experiment performed under reducing conditions.

Samples: Mouse (3T3-L1) cell lysate; Mouse (spleen) tissue lysate. PVDF membrane was probed with Anti-CD36 Antibody (Catalog# PP1008-S1) at 1:1000 dilution, followed by HRP conjugated secondary antibody. Experiment performed under reducing conditions.